



Capacity building  
playbook for a  
sustainable built and  
natural environment

March 2024

# Capacity building playbook for a sustainable built and natural environment

A sustainable built and natural environment requires skilled and knowledgeable professionals to support the global effort to deliver net zero.

Lack of skills is a major bottleneck in the transition to sustainable practices. We must embed broad-based themes related to decarbonisation, biodiversity, circularity and resilience into our practices. In this playbook, we offer a framework for international collaboration and knowledge transfer on training and capacity building for a near-zero and resilient built environment.

RICS has years of experience in delivering a body of knowledge supported by standards, guidance, tools, and resources. Our capacity building framework has a simple and scalable modular architecture that governments and sub-governments can adapt to develop their own programmes.

This playbook provides introductory, enabling, and core themes of a model capacity building programme to promote net zero and resilient building practices.

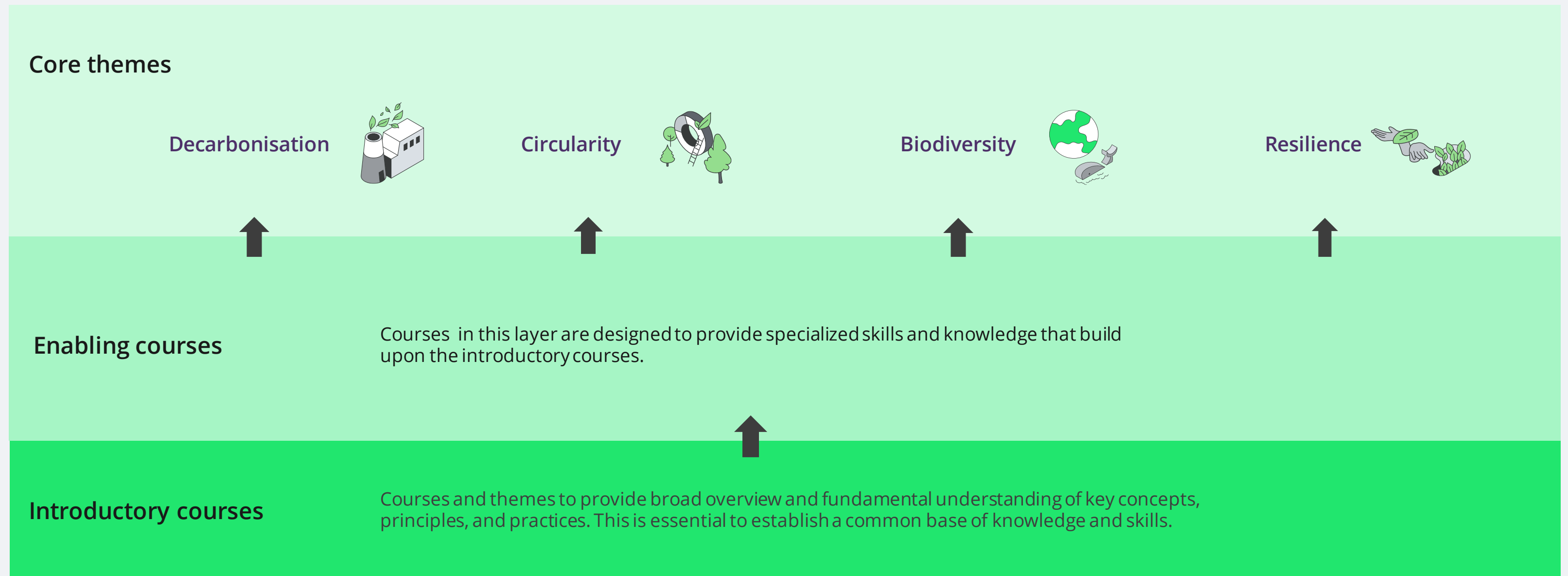


'The Buildings Breakthrough Agenda is an opportunity for the built environment to take a lead in achieving net zero. We need to train and educate a workforce that can deliver decarbonisation globally. This playbook sets out a coherent training framework across the industry, founded on existing international courses and supported by RICS' developing suite of programmes.'

**Tina Paillet FRICS**

CEO and Co-Founder of Circotrade, and RICS President 2024

# The framework



# Introductory courses

To provide a broad overview and fundamental understanding of key concepts, principles, and practices related to sustainability. This is essential to establish a common base of knowledge and skills.

- Role of the built environment in sustainability
- Social, environmental, economic and governance aspects of sustainability
- Links to Sustainable Development Goals
- Sustainable design and construction practices
- Sustainability rating and certification



# Enabling courses

To provide specialised skills and knowledge that build on the introductory courses. Enable participants to apply the principles of sustainability in more specific and practical contexts.

- Overview of life cycle costing
- Digital tools and data for sustainability
- Introduction to social value
- Environmental, social and governance (ESG) reporting
- Role of measurement in sustainability
- Importance of building codes and regulation
- Introduction to building safety



# Core themes



## Decarbonisation

Focus on net zero carbon and whole life carbon assessment.

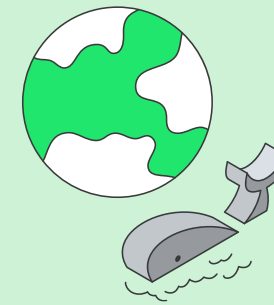
- Net zero, decarbonisation and low carbon-built environment.
- Decarbonisation processes and practices at the project and asset levels.
- Integration of decarbonisation workflows with the core design, construction, in-use and end-of-life workflows.
- Low-carbon materials for construction.
- Whole-life carbon assessment.



## Circularity

Focus on circularity principles and its links to sustainability.

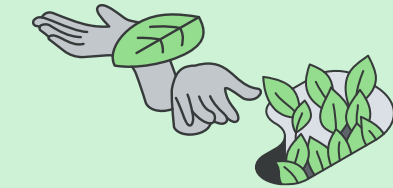
- Principles and strategies of circular economy and impact on design, construction and operation of assets.
- Differences between linear and circular flows in the context of construction.
- Circular economy and its impact on sustainable resource management.
- Strategies for waste reduction and resource optimisation in construction projects.



## Biodiversity

Focus on biodiverse urban environments and reducing pressure on natural resources.

- Biodiversity concepts and principles.
- Biodiversity and threats posed to nature from the built environment.
- Assessing and enhancing biodiversity.
- Biodiversity and sustainable design and construction.
- Stakeholder and community involvement.
- Introduction to biodiversity and environmental net gain.



## Resilience


Focus on practical steps to make assets adaptable and resilient.

- Fundamentals of resilience in built environment.
- Climate change adaptation and resilience.
- Links between adaptation, resilience and decarbonisation.
- Sustainable and resilient design and construction practices.
- Stakeholder and community engagement for climate resilience and adaptation.

# Aligned with the Buildings Breakthrough Agenda Recommendation B5

-  RICS products available or under development
-  Certificate
-  Additional themes

## Decarbonisation

-  Whole life carbon assessment – 7 module certificate program
- Introduction to Whole life carbon assessment – 3 modules web class
- Net zero and decarbonisation

## Circularity

- Circular economy: measuring and assessing circularity
- Circularity Principles in Built Environment

## Biodiversity

- Biodiversity Net Gain
- Biodiversity and climate action

## Resilience

- Resilient Infrastructure
- Resilient buildings
- Climate adaptation and resilience

### Enabling courses

- Benchmarking
- Life Cycle Costing - ICMS
-  BIM certificate
- Social Value
- IPMS All Buildings, Introduction and Application
- Sustainability and ESG Disclosures
- Sustainability rating and certification
- Fire Safety
- Building Codes

### Introductory courses

- Sustainable built and natural environment



**RICS**<sup>®</sup>

[rics.org](https://www.rics.org)