



# Winners

## Grand Final

Friday 21 October  
12:00 - 16:00

The Londoner Hotel,  
38 Leicester Square,  
London WC2H 7DX

Headline sponsor



Category sponsors



oyster

# Contents

---

5	Introduction
8	Commercial Development
11	Community Benefit
15	Heritage Project
19	Public Sector Project
23	Refurbishment / Revitalisation Project
26	Residential Project
31	Environmental Impact Award
34	Infrastructure Team of the Year Award
37	Outstanding Small Surveying Team/Firm
40	Outstanding Large Surveying Team/Firm
43	Lifetime Achievement Award
45	Project of the Year



Proud sponsors of the RICS Awards 2022

# WE ARE SIKA ROOFING

WE ADVISE  
WE SUPPORT  
WE CARE

- Expert technical support and advice throughout your project
- Dedicated on-site support throughout your project
- Aftercare support following project completion
- Nationwide network of highly trained
- Industry leading guarantees - covering both products and workmanship
- Fully tested and independently accredited roof and balcony systems

TO REQUEST ONE OF OUR CPDs VISIT [www.sika.co.uk/roofing](http://www.sika.co.uk/roofing)

 @SikaLimited

Call: 01707 394444

[www.sika.co.uk](http://www.sika.co.uk)

BUILDING TRUST







# Introduction

# Introduction

The RICS UK Awards showcase the most inspirational initiatives and developments in land, real estate, construction, and infrastructure. They recognise outstanding achievement, teamwork, and companies.

'The judging panel and I were so impressed with the dedication of the teams behind these winning projects. They are a true testament to the tireless dedication of industry professionals across the UK. Their talent and collaborative approaches have resulted in exemplary and innovative schemes that really do represent the very best built projects across the regions. Each of the winning projects is having a profoundly positive impact on their local area and RICS is delighted to recognise the hard work that went behind ensuring these projects were delivered successfully, particularly in such challenging and uncertain times as we navigated through the pandemic. The teams behind them should be incredibly proud of the part they have played in helping to improve their community and wider local economy.'

**David Brooks Wilson FRICS FCIS FCT FCMI**  
National Head Judge

Follow the regional winners' announcements [here](#)

## Judging panel



David Brooks Wilson FRICS  
FCIS FCT FCMI



Claudine Blamey



Colin Harrop FRICS



Hugh Kemsley OBE MA FRICS



Kerry Gibbs MRICS



Malcolm Young FRICS



Michael Fiddes MRICS



Richard Moxon BSc FRICS



Tracey Hartley FIRPM  
MRICS MSc MBA



# Commercial Development





## Commercial Development

The Commercial Development category is awarded to an outstanding commercial property development or initiative whether retail, office, industrial or mixed-use.

### SHORTLISTED

- Ada Lovelace Building, South West
- Advanced Manufacturing Research Centre, North West
- Campus Central, University of Stirling, Scotland
- Goodsheds, Wales
- Hudson Quarter, Yorkshire & Humber
- Hylo, London
- i9 Building, West Midlands
- Merchant Square, Northern Ireland
- Stane Retail Park, East of England



WINNER



## Hylo, London

---

### Nominated by Arcadis

Hylo is an exemplar £140m mixed-use development in London's vibrant and commercially significant Old Street area, delivering 25,800m<sup>2</sup> of office/retail space and 25 social homes across 29 floors.

Commissioned by CIT, with Arcadis as cost consultant and Mace as main contractor, the innovative design retained a significant amount of the original building's sub and superstructure as a sustainable solution to lower concrete use and carbon emissions, acting as a blueprint for future projects.

'The project brought together multiple funding streams, dealt with strict planning requirements, incorporated very high sustainability goals and complex structural issues which presented a complexity above many other schemes. The addition of 25 much needed social housing units meant the project stood out as an exemplar of what can be achieved with high levels of professionalism, teamwork and innovation and is a worthy winner of the national award.'

**Richard Moxon BSc FRICS**  
National Commercial Development Judge



# Community Benefit



## Community Benefit

The Community Benefit category recognises outstanding achievement in providing a facility that directly benefits the local community. The project must illustrate its success through local community feedback with diversity and inclusion embedded throughout.

### SHORTLISTED

- An Chroí Community Hub, Northern Ireland
- Bradbury View, South East
- Broughton House, North West
- East Quay, South West
- Kellingley Colliery, Yorkshire & Humber
- Lord Nelson Public House, East of England
- Merkinch Primary School and Family Centre, Scotland
- Nottingham Castle, East Midlands
- NUCASTLE Community Hub, North East
- STEAM Academy, Wales
- The Daimler Powerhouse, West Midlands
- The Wilds, Barking Riverside, London



WINNER



## The Wilds, Barking Riverside, London

### Nominated by Barking Riverside Ltd and L&Q

The Wilds at Barking Riverside is a multi-purpose community, ecology and event space. With community benefit embedded in every aspect of The Wilds, the building brings important new facilities to Barking Riverside and has been delivered with community partnerships to extend opportunities. A dual-purpose facility, The Wilds houses the collection centre for the largest single vacuum waste system in Europe, by Swedish company Envac, and is a place the public can learn about the wildlife and environment of the local area. At The Wilds, the community comes together to experience free programmes, exhibitions and resources that promote making sustainable choices.

'The Wilds is an outstanding community centre plus an innovative household refuse collection depot which collects refuse from the surrounding area by way of an underground system of pipes, thus eliminating the need for collection vehicles within the locality. The combination of these two activities under one roof gave this project the edge.'

**Hugh Kemsley OBE MA FRICS**  
National Community Benefit Judge

## HIGHLY COMMENDED



## An Chroí Community Hub, Northern Ireland

### Nominated by Doherty Architects

Top of the Hill Community Centre, as it was previously known, was constructed in the 1970s and located on the Bard Hill Road in Gobnascale. The centre was demolished in 2011 due to poor accessibility and condition.

This new community centre, named An Chroí, ('The heart' in Irish) for Derry City and Strabane District Council and Hillcrest Trust includes a creche, youth wing, training spaces and a multi-purpose hall encircling a central communal courtyard. The centre creates a focal point or gateway to a wider set of developments at the Top of the Hill Park and surrounding area.

'This excellent and intensively used centre provides cradle to grave services to the surrounding community and is playing a significant role in bringing together various factions within the community which in the past has had a troubled history.'

**Hugh Kemsley OBE MA FRICS**  
National Community Benefit Judge



# Heritage Project





## Heritage Project

The Heritage Project category honours excellent work in the conservation of a single building or a group of buildings or structures and covers renovation or conversion to a new or original use.

### SHORTLISTED

- Buxton Crescent Hotel and Thermal Spa, East Midlands
- Cliveden Conservatory Cafe, South East
- Provost Skene's House, Scotland
- Seaton Delaval Hall, North East
- Sir William Henry Bragg Building, Yorkshire & Humber
- St Paul's Cathedral, Equal Access Project, London
- The Elizabethan House, South West
- The Exchange, University of Birmingham, West Midlands
- The Old Library, North West
- The School House, Methodist College, Northern Ireland

WINNER



## Seaton Delaval Hall, North East

### Nominated by Mosedale Gillatt Architects

The £5.3m 'The Curtain Rises' project is the largest and most ambitious National Trust project of recent years. The completion of conservation works now set the scene for the delivery of an exciting and innovative range of interpretation and exhibition installations that reflect the Delaval family history and put the drama back into Northumberland's most flamboyant 'party' house.

The property is Grade I listed and plays host to over 20 individually listed buildings. This project involved conservation and adaptation across the historic estate and the range and nature of the works make this project an exemplar of conservation practice.

'Seaton Delaval Hall is a flagship project for The National Trust both in terms of conservation and regeneration. Extensive research and attention to detail has ensured not only a highly considered approach to the conservation and repair of this significant Grade I listed property but also transformed the experience for visitors. The outstanding quality of craftsmanship and its sensitivity, using local contractors & materials, ensures that its story & history are easily read for those visiting and makes it a worthy winner of the national award.'

**Kerry Gibbs MRICS**  
National Heritage Project Judge

## HIGHLY COMMENDED



## The Old Library, North West

### Nominated by Arcadis

The Old Library project was born from a love for a community and a derelict, Grade II listed library building. Completed in 1904 and funded by Philanthropist Andrew Carnegie, it provided opportunities for a disadvantaged community for 100 years.

A team of empathic and knowledgeable professionals with an intrinsic understanding of the legacy of this building was needed. With integrity and care, OMI Architects and Arcadis heritage professionals conserved the historic fabric of the building; cultivated sustainability; fostered outreach and education; and harnessed the power of the local community to build a new chapter in the story of this much-loved building.

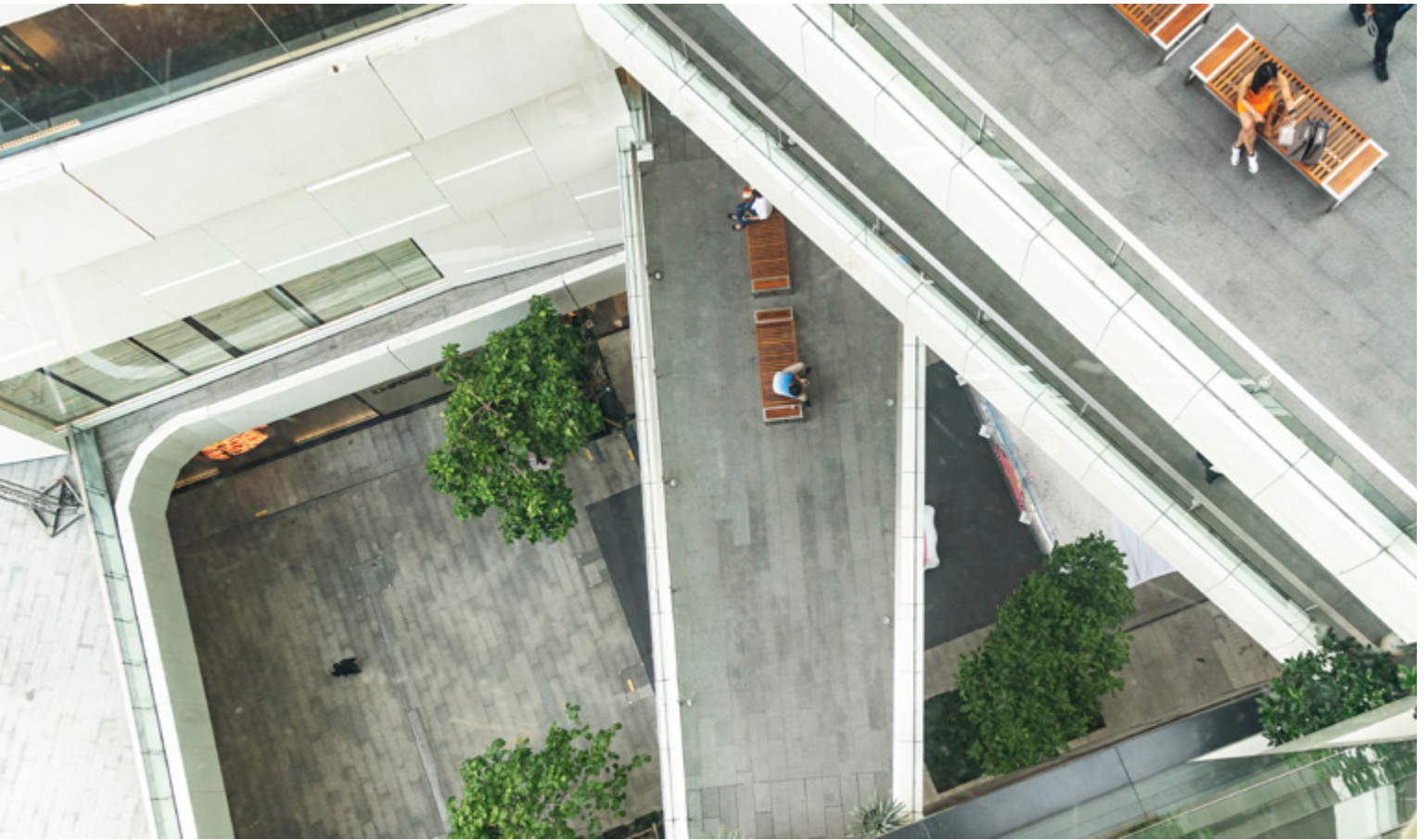
'This important Thomas Shelmerdine designed building has been saved from dereliction by an extremely knowledgeable and enthusiastic team. Through extensive research combined with a very high standard of conservation, this much-loved Grade II listed building has been sympathetically restored and sensitively adapted to reflect its historical past whilst ensuring its future for the local community.'

**Kerry Gibbs MRICS**  
National Heritage Project Judge





# Public Sector Project



## Public Sector Project

This category celebrates an exceptional public sector project. From schools, hospitals, and leisure centres through to our roads, rail and tunnels, these projects influence and shape our built environment.

### SHORTLISTED

- Buckinghamshire Council, South East
- Clatterbridge Cancer Centre, North West
- Erne Campus, South West College, Northern Ireland
- Humber Hull Frontages, Yorkshire & Humber
- Leicester Children's Hospital, East Midlands
- Llancarfan Primary School, Wales
- Mildenhall Hub, East of England
- Riverside Community Centre, South West
- School of Engineering, University of Birmingham, West Midlands
- Stockton Globe, North East
- The Great Tapestry of Scotland Gallery, Scotland



WINNER



## Erne Campus, South West College, Northern Ireland

### Nominated by Hamilton Architects

Erne Campus is the world's first educational, and currently the largest, Passive House Premium rated building. The first building in the UK to achieve both PHP and BREEAM Outstanding accreditations, yielding an anticipated 90% reduction in energy costs, it provides an international exemplar in the achievement of nearly Zero Energy Building for the Public Sector. The Campus, at the heart of the communities in Fermanagh and Tyrone, provides higher education across a range of disciplines, with an emphasis on sustainability and cyber security, to deliver impactful career opportunities for local young people nationally and internationally.

'Despite the many obstacles that it needed to overcome; this project is exemplar. Not only has it generated a centre for excellence for local students of the built environment as a core curriculum subject, but it has also raised the profile and the pride in all its inhabitants and neighbours in an area that has suffered much in recent times.'

**Malcolm Young FRICS**

National Public Sector Project Judge



## HIGHLY COMMENDED



## Clatterbridge Cancer Centre, North West

### Nominated by BDP


The Clatterbridge Cancer Centre is one of the largest networked cancer centres in the UK, combining world-class clinical services, research, and academic excellence in Liverpool City Centre. The Centre enables the Trust to deliver the highest quality, specialist non-surgical oncology treatment and care for the wider region.

The brief was met by the careful location of departments, designing the building to step back in profile at its upper levels, creating external terraced space for wards and the chemotherapy floor. The terraces have spectacular panoramic views across Liverpool, giving staff, patients and visitors alike access to external landscaping and fresh air.

'Class leading patient treatment and care was the first and foremost consideration in the design and delivery of this development. It is the replacement of an outdated and isolated centre within a highly constrained site immediately adjoining the Royal Liverpool University Hospital, with the very best facilities both for specific and related needs that has resulted in the project being highly commended.'

### Malcolm Young FRICS

National Public Sector Project Judge



# Refurbishment/ Revitalisation Project



## Refurbishment/Revitalisation Project

This category honours an outstanding restoration/part restoration of a building that was no longer fit for purpose with the aim of making it more energy efficient and sustainable.

### SHORTLISTED

- Burrell House, South East
- Buxton Crescent Hotel and Thermal Spa, East Midlands
- Clare St Regis Student Accommodation, East of England
- Houlton School, West Midlands
- India Buildings, North West
- Maelfa Regeneration, Wales
- Merchant Square, Northern Ireland
- Meridian Water, London
- Neville Hall, North East
- The Bodmin Jail Hotel & Visitor Attraction, South West
- University of Hull, Yorkshire & Humber



WINNER



## Buxton Crescent Hotel and Thermal Spa, East Midlands

### Nominated by The Trevor Osborne Property Group

Sitting in the centre of Buxton, the Crescent was built between 1780-89 by the Fifth Duke of Devonshire's in his plans to establish a Georgian spa town. Grade I listed, it is one of the most architecturally significant buildings in the country. The properties now have a sustainable future, restored and conserved to create an 81 bedroom luxury spa hotel, a unique thermal mineral water spa, a visitor experience and six shops by Buxton Crescent Ltd (a joint venture partnership between The Trevor Osborne Property Group and CP Holdings Ltd).

'Being the restoration of a unique Georgian building in an urban setting, which took more than two decades to come to realisation, this is a worthy winner and can be endorsed again as the restoration of the decade.'

**David Brooks Wilson FRICS FCIS FCT FCMI**  
National Refurbishment/Revitalisation  
Project Judge



# Residential Project





## Residential Project

This category honours an outstanding residential development of either a single building or overall project, new build, or conversion.

### SHORTLISTED

- Agar Grove, Phase 1b, London
- Canonmills Garden, Scotland
- Clare St Regis Student Accommodation, East of England
- Featherbeds, South West
- Perry Barr Regeneration Scheme, West Midlands
- The Banks, Northern Ireland
- The Feel Good Project, East Midlands
- The Regeneration of William Muge & Snelgrove, South East
- The Sycamores, North East



WINNER



## Perry Barr Regeneration Scheme, West Midlands

### Nominated by Birmingham City Council, Arcadis & Lendlease

Perry Barr Regeneration Scheme is a transformational £370m legacy, residential development in a deprived suburb of North West Birmingham.

With Arcadis as lead consultant and Lendlease as principal contractor, it provides up to 1,000 homes for Birmingham City Council, meeting crucial needs for market sale and rent, affordable and critical extra care units and unlocks a wider programme of up to 5,000 homes. Despite COVID-19 challenges, the project outstripped social value targets, providing jobs, training, apprenticeships and local SME spend in a high unemployment area.

The scheme boosts inclusivity in Birmingham, with sustainable design and huge transport investment spearheading resident behavioural change towards a low carbon future.

'This is a wonderfully collaborative regeneration scheme driven by a passionate and engaged team which highlights the value chartered surveyors bring to multi-disciplinary teams. Close liaison with a hugely supportive local authority is bearing fruit by delivering much needed housing. This project leverages the legacy of the Commonwealth Games without becoming a slave to it and always keeping the local community at its heart. An uplifting scheme to visit!'

**Tracey Hartley FIRPM MRICS MSc MBA**  
National Residential Project Judge



## HIGHLY COMMENDED



## Agar Grove, Phase 1b, London

### Nominated by Mæ Architects

Agar Grove, Phase 1b, nominated and designed by architecture practice Mæ Architects, marks the latest phase in a 57 home Passivhaus regeneration scheme in Camden, master planned by Mæ and Hawkins\Brown alongside landscape architects Grant Associates.

With the masterplan on track to be the UK's largest Passivhaus scheme, the highly sustainable design of Phase 1b's 57 homes enable residents to benefit from significant cuts in energy usage and bills, reducing the impact of fuel poverty. Informed by resident feedback, the scheme introduces a strong focus on private and public amenity space, to support residents' wellbeing and the estates' distinct sense of community.

'This is an innovative and brave project creating exceptionally energy efficient private and social homes; more important now than ever. The strength of the local community is palpable, and these attractively designed homes are the result of meticulous planning and strong engagement.'

**Tracey Hartley FIRPM MRICS MSc MBA**  
National Residential Project Judge

# Knowledge. Innovation. Excellence.

Our relentless focus on excellence is how we strive to be the best that we can be – for ourselves, our clients and their end-users.

We grasp every opportunity to widen our knowledge and learn new skills. This drives better outcomes from the work we do and enables us to deliver right first time on every project.

That is why we are proud to support the RICS UK Awards 2022 as sponsor of the Infrastructure Team of the Year Award, helping to promote best practice and innovation for the benefit of all.

**Congratulations to all the finalists.**

Opening opportunities  
with connected thinking.

**[mottmac.com](https://mottmac.com)**

Mott MacDonald is shortlisted in the following categories:  
Environmental Impact Award  
Outstanding Large Surveying Team/Firm Award



# Careers with Oyster



Your ambition is our ambition. Your success is our *success.*

Regardless of your background, identity or qualifications, if you choose to join us, you'll be treated with the same respect as everyone else.

Yes, you read that right.

You're welcome here.

Our expectations are high, but so are the rewards. Check our Instagram; read our reviews on Glassdoor or browse our website for more information about us.

We're committed to an equitable recruitment process, so feel free to apply in any way that suits you; direct with your CV, via our website, Whatsapp, voice note, or video message to mobile number 07855 398 514. The more creative, the better.

Individually different, stronger together.

64 North Row,  
Mayfair,  
W1K 7DA  
(we are an accessible workplace)

**oyster**





# Environmental Impact Award



## Environmental Impact Award

This category recognises projects where innovation, design or construction techniques have been utilised to address environmental challenges and improve sustainability.

### SHORTLISTED

- 30 Lighterman, London
- Ada Lovelace Building, Bristol
- Clare St Regis Student Accommodation
- Family Kitchen + Shop, Royal Botanic Gardens, Kew
- Foleshill Health Centre
- GenZero, Yorkshire & Humber
- Humber Hull Frontages
- Lydd and Hythe Ranges Coastal Flood Defences Scheme
- Merkinch Primary School and Family Centre
- St Sidwell's Point, Exeter
- Stourton Park & Ride
- The GRP22, Hull
- Unit E Premier Park, London
- Worksop Fire Station



WINNER



## St Sidwell's Point, Exeter

### Nominated by Randall Simmonds LLP

St Sidwell's Point is the UK's first Passivhaus Leisure Centre built with climate resilience for 2080 and Healthy Building Biology principles. Constructed by Kier for Exeter City Council, the design team included Space Place, Gale & Snowden and Arup, and was delivered by Randall Simmonds LLP and Baker Ruff Hannon. The project is nominated as a building of high environmental standards, innovation and quality delivered without a performance gap.

'This project is a brilliant demonstration of what can be achieved with a clear vision and a very collaborative team right across the whole value chain. This building is a great example of environmental and social sustainability.'

**Claudine Blamey**

National Environmental Impact Judge





# Infrastructure Team of the Year Award



## Infrastructure Team of the Year Award

This category celebrates the contribution of a team to the delivery of exceptional infrastructure projects, which includes basic structures, systems and services required for operation.

### SHORTLISTED

- North West Multi Modal Transport Hub Project Team
- Swanley Station Redevelopment Project Team
- Trams to Newhaven Project Team

Sponsored by **Mott MacDonald**



WINNER



## North West Multi Modal Transport Hub Project Team

### Nominated by Consarc Conservation


The North West Transport Hub project involved the restoration and refurbishment of the former Grade B listed Waterside Train Station in Derry, Londonderry. The new Hub has delivered an important gateway to the North West, aimed at regenerating the local area.

It aims to encourage a modal shift from car to public transport and other sustainable modes by providing integrated and convenient services to encourage more active travel for a healthier region. The design team provided a high standard of service to the client demonstrating a commitment to professional ethics and the highest ideals of professionalism to successfully deliver the project.

'The Integrated Design Team appointed by Translink provided an extremely high standard of service to the Client with the quantity surveyors acting as an integral part of the team, reviewing costs against budget at every stage. The project is a worthy winner.'

**David Brooks Wilson FRICS FCIS FCT FCMI**  
National Infrastructure Team of the Year Judge





# Outstanding Small Surveying Team/Firm



## Outstanding Small Surveying Team/Firm

This category recognises an outstanding small surveying firm or team with fewer than 50 employees.

### SHORTLISTED

- AspinallVerdi Ltd
- b&m
- Copping Joyce Surveyors
- Ekkist
- Modus Construction Consultants Ltd
- PMP
- Quantem
- Sheffords Chartered Surveyors
- taylor lewis
- Torridon
- TSP

## WINNER



## Modus Construction Consultants Ltd

### Nominated by Modus Construction Consultants Ltd

Modus is an independent, chartered quantity surveying firm based in Kent. Organically grown by two passionate Directors since inception in 2014, Modus has grown to a strong team of ten and aspire to be the number one surveyor in the Southeast.


Despite the challenges of the last 18 months, Modus have not only increased headcount, but also turnover, and were recognised as 'Employer of the Year 2021' in the Kent Excellence in Business Awards (KEiBA). Modus are clear in where they see the business going within the next five years and know they have a dedicated team to get them there.

"There was a strong and varied list of entries for this category both geographically and discipline wise. Modus Construction Consultants Ltd stood out for the combination of their passion for their business, their teamwork, innovation and focus on sustainability not only in their work but also in their workplace."

### Michael Fiddes

National Outstanding Small Surveying Team/Firm Judge





# Outstanding Large Surveying Team/Firm



## Outstanding Large Surveying Team/Firm

This category recognises an outstanding small surveying firm or team with more than 50 employees.

### SHORTLISTED

- Advisory and Programme Delivery Team, Mott MacDonald
- Bailey Partnership
- Building Surveying Team, AECOM
- Lenders, Investors and Insurers Team, Arcadis



WINNER



## Lenders, Investors and Insurers Team, Arcadis

### Nominated by Arcadis


The team saw unprecedented growth in 2021, expanding and innovating and strengthening their client relationships and is unrecognisable from that of 18 months ago when they offered only a fraction of the capability they now demonstrate.

They have set themselves new standards in terms of revenue growth, global coverage, and standards of service in a very challenging economic period. Their employee satisfaction also continues to grow. Instead of allowing COVID-19 to isolate the team, they have fostered transparency and drawn their people together through multiple innovations that truly embody the Arcadis mission statement, that is - 'Improving Quality of Life'.

"The team's ability to focus on a client's needs over the lifetime of a building, rather than just its construction and their work towards obtaining real feedback and pushing equality seemed to foster an authentic collaborative culture; overall a high quality team and worthy winner."

### Colin Harrop FRICS

National Outstanding Large Surveying Team/Firm Judge



# Lifetime Achievement Award



## LIFETIME AWARD RECIPIENT



## Lifetime Achievement Award

This award recognises an individual who has demonstrated outstanding commitment to RICS and the wider profession and who has achieved greater social benefit through their work in the built environment, championing social impact and driving through change.

### Diana Fitzsimons MA (Econ) MSc (TP) FRICS FRTPI FIoD

---

Diana's career in planning and development spanning over 40 years has been unusually varied. She has worked in leading roles in the public, private, voluntary, and higher education sectors, contributing to innovative thinking and the development of Belfast as a liveable city, attractive to inward investors and knowledge industry employees.

Diana has applied best practice approaches gained from her international work with IFHP and UN Habitat and ensured implementation of sustainable developments in urban regeneration areas. She actively encourages women surveyors and continues her involvement in higher education as a Visiting Professor and Training Councillor.



# Project of the Year



## Project of the Year

This award is the pinnacle of the RICS Awards. It is presented to the entry that is judged to have excelled in any or a combination of all eight categories and is considered to be the most remarkable entry from the shortlist. Judges looked for evidence of innovation and a commitment to value for money.



## 2022 PROJECT OF THE YEAR WINNER



## Erne Campus, South West College

---

Erne Campus is situated in Enniskillen in Northern Ireland; it is a largish rural town two hours' drive west of Belfast in a picturesque landscape of low green hills set between Rivers and Lakes. This development replaces an FE College elsewhere in the town, which reached the end of its functional use.

The vision and subsequent delivery of the replacement led by a chartered surveyor is a fascinating story in itself. Suffice to say that given local, regional, national and international difficulties over the development period it got built as a result of strong local - and later regional - support.

The result is an impressive building overlooking the town from a low hill surrounded by water. The building has already been recognised by the awarding of several accolades, e.g. Erne Campus is a Passive House Premium and BREEAM Outstanding Rated building and one of 26 UN Centres of Excellence for High Performance Buildings around the world. PHP requires that the energy generated onsite be higher than the demands of the building. It is a UNECE Centre of Excellence for High-Performance buildings and received the Green Gown Award 2021 for Renewable Engine, a cross-border energy knowledge sharing project.

Such is its success that it has already become a beacon both in the UK and Continental Europe for demonstrating how can we build and adapt for climate change, providing a living example where its students will be educated and trained to go into the world to put into practice what they have learned. It is instructive to realise that it fulfils a need which wasn't fully recognised at the time the vision was conceived but which the originators and their supporters had the foresight to see and deliver.





### The Past

Sika was established in 1910 with an innovative product Sika -1, a quick-setting waterproofing admixture for mortar.



### The Future

Innovation to meet the challenges of digitalisation in construction with 3D concrete printing, just one example of how we anticipate and meet our customers' needs.

FLOORING | REFURBISHMENT | CONCRETE | SEALING & BONDING | WATERPROOFING | ROOFING | INDUSTRY

# WE ARE SIKA

## RICS Awards 2022

For further information, please visit our website:  
[www.sika.co.uk](http://www.sika.co.uk)

 @SikaLimited

 @SikaLimited

 @Sika

BUILDING TRUST



## Delivering confidence

We are RICS. Everything we do is designed to effect positive change in the built and natural environments. Through our respected global standards, leading professional progression and our trusted data and insight, we promote and enforce the highest professional standards in the development and management of land, real estate, construction and infrastructure. Our work with others provides a foundation for confident markets, pioneers better places to live and work and is a force for positive social impact.

Americas, Europe, Middle East & Africa  
**[aemea@rics.org](mailto:aemea@rics.org)**

Asia Pacific  
**[apac@rics.org](mailto:apac@rics.org)**

United Kingdom & Ireland  
**[contactrics@rics.org](mailto:contactrics@rics.org)**



**[rics.org](https://www.rics.org)**