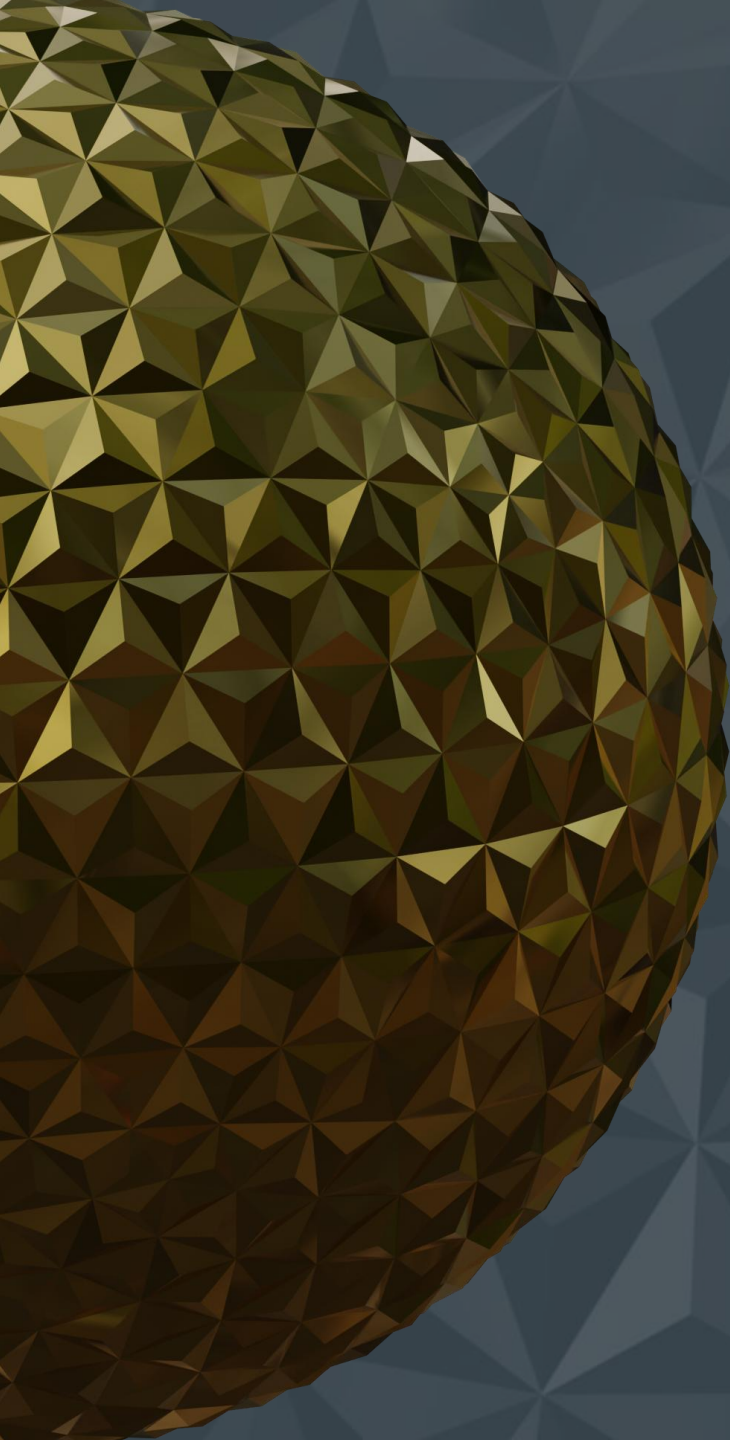


UK
Grand Final
Winners

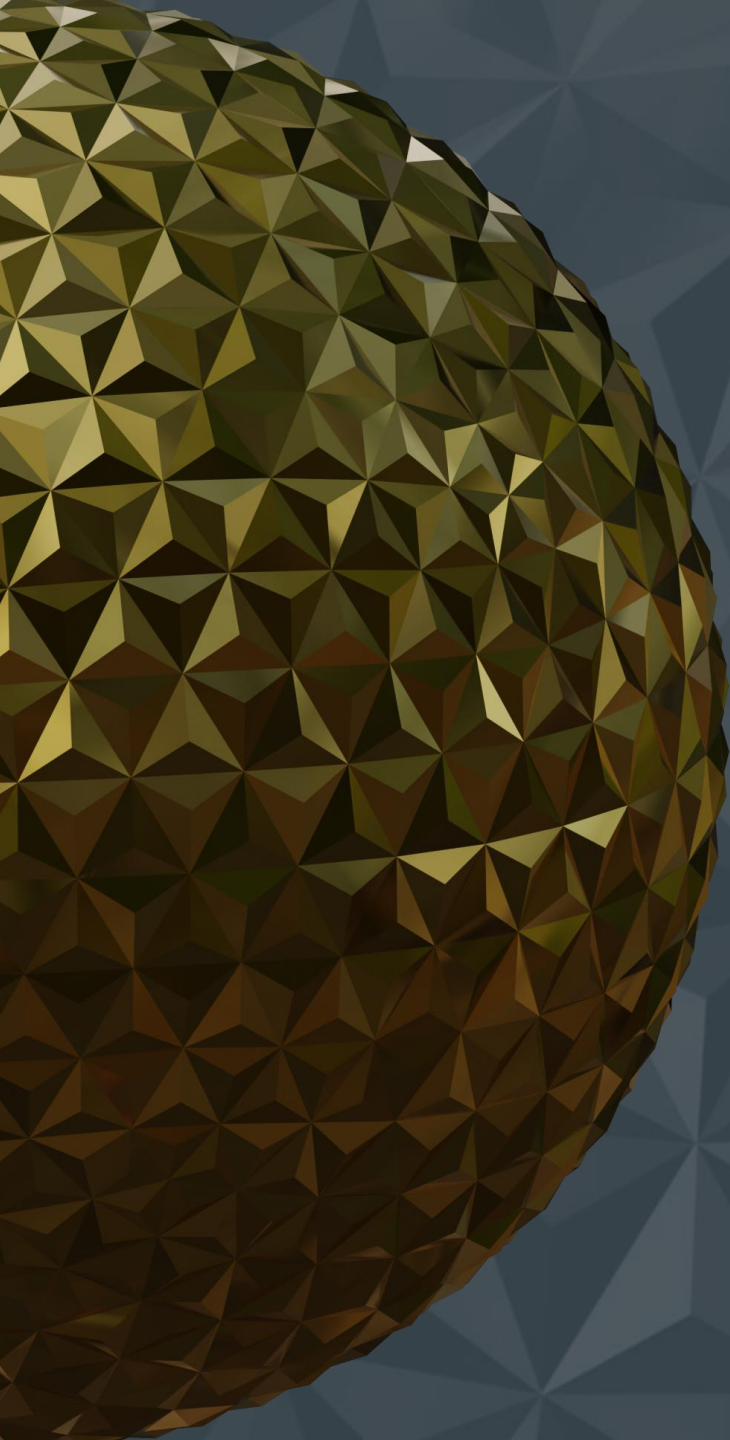


Winners

UK Grand Final

Friday 16 October
19:00 – 23:00

Hilton Park Lane
22 Park Ln, London W1K 1BE



UK
Grand Final



Kerry Gibbs MRICS
UK National Awards Chair &
Heritage Lead



Mandy Spenceley BSc FRICS
Outstanding Contribution to Surveying
by a Large Firm Lead Judge



Selina Baptiste MRICS
Outstanding Contribution to Surveying by an
SME Lead Judge



Hugh Kemsley OBE MA FRICS
Community Benefit Lead Judge



Richard Moxon BSc FRICS
Commercial Development Lead Judge



Saba Nayab BSc FRICS
Refurbishment/Revitalisation Lead Judge

2025 UK Awards National Judging Panel



David Sandbrook FRICS MRTPI
Land Management and Sustainable
Development Lead Judge



Sean Farrell, FRICS
Residential Development Lead Judge



Mike Ward FRICS FCABE MICWCI CEnv
Environmental Impact Lead Judge

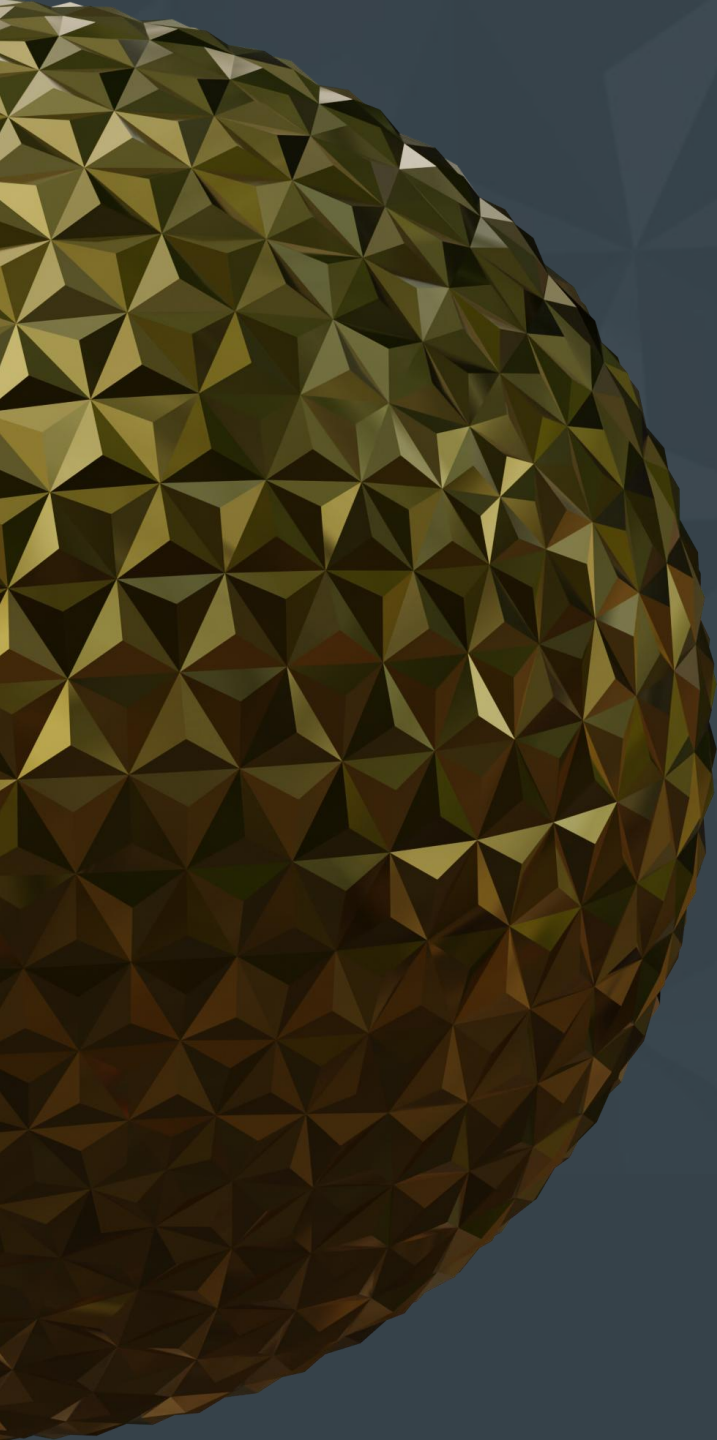


Jeevani Subasinghe CEng FICE MRICS
Infrastructure Lead Judge

UK Awards 2025 National Judging Panel



Thank you to our sponsors





Commercial Development

Category Sponsor



Shortlisted

The Commercial Development category is awarded to an outstanding commercial property development or initiative whether retail, office, industrial or mixed-use.

8 Bishopsgate, London

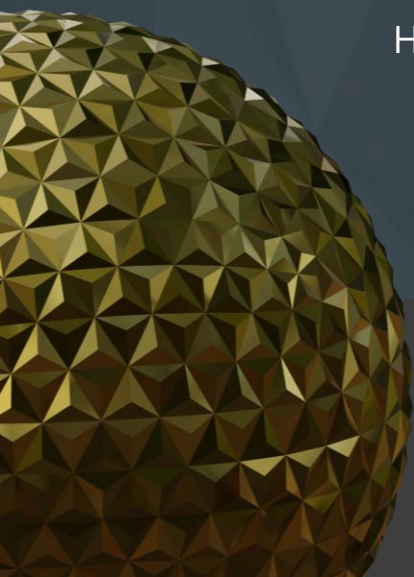
Fulham Pier, London

Welcome Building, Bristol

Melville Building, Royal William Yard, Plymouth

Co-Op Live Arena, Etihad Campus, Manchester

HSBC Leicester Office, Bede Island Business Park, Leicester





Highly Commended Commercial Development



8 Bishopsgate, London

Nominated by Turner & Townsend Alinea



8 Bishopsgate is a landmark 50-storey mixed-use tower in the heart of the City of London. Developed by Mitsubishi Estate and Stanhope PLC, the building provides office accommodation, retail spaces, extensive building amenities, and a public viewing gallery at level 50.

Situated in the Eastern Tall Building Cluster, it blends contemporary design with the City's historical context.

As the first London tower to achieve BREEAM Outstanding, it sets a new standard for sustainability.

The development supports the local economy by attracting businesses, creating jobs, and enhancing the area for residents, workers and visitors alike.

This new 50 storey mixed use tower in the Eastern Tall Building Cluster provides mixed use accommodation including a public viewing gallery giving stunning views over the city and beyond. In achieving BREEAM Outstanding and innovative design features it sets new sustainability standards and is viewed as an exemplar for future tall towers.

Health and well being is at the heart of the building and good levels of lettings are a testimony that the tower enhances the current office offer in the City but which also benefits the local community.

Richard Moxon BSc FRICS
Commercial Development Lead Judge

8 Bishopsgate, London

Nominated by Turner & Townsend
Alinea



Winner Commercial Development



Welcome Building, Bristol

Nominated by Trammell Crow Company



Welcome Building is a highly sustainable new workplace that significantly raises the bar within its sector. It stands out from the rest, from the highest industry credentials to harnessing innovation to not only deliver the project in an exemplary way but also ensure it operates as such.

This is a user-focused, wellbeing-led and inclusive scheme. Formed of low carbon materials, it has been delivered through a collaborative approach that drives efficiency and enables the building to operate as net zero.

Welcome Building® represents the future of the workplace, establishing a new standard not just for the south-west but nationwide.

Welcome Building is an exceptional commercial office development, from the outset the team shared the strategic vision which has delivered a workplace for the future.

Bristol now benefits from a building which has set a blueprint and benchmark in sustainability, wellbeing and community.

Set over nine floors this net zero building has enhanced the local area and raised the bar within its sector, innovations such as linking the building to the Bristol Heat Network and numerous wellbeing initiatives mark the way forward and to the future of commercial development.

Richard Moxon BSc FRICS
Commercial Development Lead Judge

Welcome Building, Bristol

Nominated by Trammell Crow
Company



Community Benefit

Category Sponsor



Shortlisted

The Community Benefit category recognises outstanding achievement in providing a facility that directly benefits the local community. The project must illustrate its success through local community feedback with diversity and inclusion embedded throughout.

Sherwood Observatory, Nottingham

Shankill Shared Women's Centre, Belfast

Community Diagnostic Centre, Gateshead

Gasyard Heritage and Exhibition Centre, Derry

Knightsbridge Step-Free Access Works, London

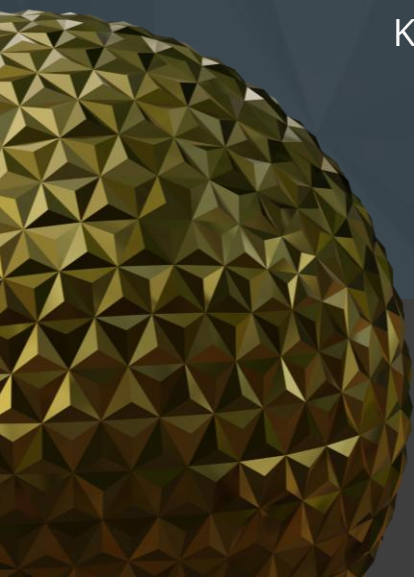
Midland Metropolitan University Hospital, Smethwick

Sandgate School, Kendal

Tiber Community Building, Liverpool

Tustin Estate, London

Urban Splash, Royal William Yard, Plymouth





Highly Commended Community Benefit Project



Sherwood Observatory, Nottingham

Nominated by AnotherKind Architects



The new state-of-the-art Science Discovery Centre and Planetarium development at Sherwood Observatory has created a landmark building for Nottinghamshire and reinvigorated STEM education in the region by inspiring a new generation of scientists and engineers, as well as supporting future job growth.

The new development delivers an immersive and unique educational experience for all ages that will attract visitors from across the East Midlands and beyond to Ashfield for years to come.

This outstanding project, undertaken by a relatively small charity, makes inspired use of a redundant underground reservoir which has been converted for exhibition purposes.

Above this a new building contains Reception Areas, a Café and a State of the Art Planetarium.

Overall, the complex is a very popular visitor attraction and makes a significant contribution to Education in Science for the Region.

Hugh Kemsley OBE MA FRICS
Community Benefit Lead Judge

Sherwood Observatory, Nottingham

Nominated by AnotherKind
Architects



Winner

Community Benefit



Shankill Shared Women's Centre, Belfast

Nominated by TODD Architects



The Shankill Shared Women's Centre in North & West Belfast is a purpose-built facility for women and families from all communities. Spanning 3,250m² across three floors, it includes a multi-purpose hall, nursery, education rooms, youth units, health facilities, and a café.

Funded through the EU PEACE IV Programme, the centre promotes social cohesion and offers services focused on education, wellbeing, and youth empowerment.

Designed by TODD Architects and project managed by W H Stephens, it provides a welcoming, safe, and inclusive environment.

Since its 2024 completion, it has become a hub for personal development, community connection, and growth.

In 1987, 8 inspired women felt that they had missed out on their education due to the troubles and formed this organisation to provide facilities to help women "from cradle to grave".

This new centre is the culmination of over 35 years of determination and hard work, now providing a full range of activities for women of all ages, including a nursery for children of pre-school age, educational and health activities – particularly strong for teenagers – and good spaces for outside organisations to rent.

This outstanding project was borne out of the community with individuals from that community involved in all stages of the development and is now serving women from all sectors of the locality of Belfast.

Hugh Kemsley OBE MA FRICS
Community Benefit Lead Judge

Shankill Shared Women's Centre, Belfast

Nominated by TODD Architects



Heritage

Category Sponsor



Shortlisted

The Heritage Project category honours excellent work in the conservation of a single building or a group of buildings or structures and covers renovation or conversion to a new or original use.

V&A Museum, Madejski Courtyard, London

Rochdale Town Hall, Rochdale

The Buttermarket, Redruth

Elizabeth Tower, Westminster

Edinburgh Futures Institute, Edinburgh

Ivy Lodge, Cirencester

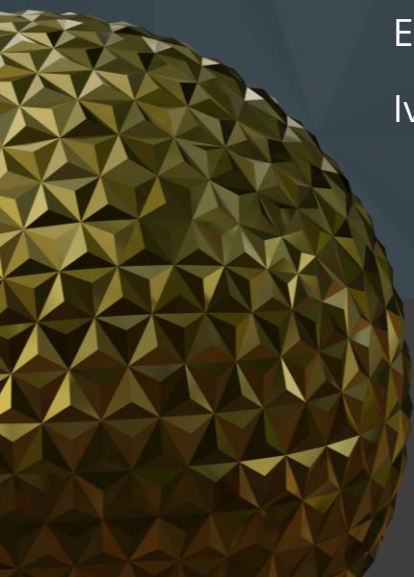
Rosslyn Castle, Roslin

Soane Stable Yard, Royal Hospital Chelsea, London

The Compass Point Project, The Storm Tower, Bude

The Rising' at Raby Castle, Park and Gardens, Near Darlington

Walworth Town Hall, London





Winner

Heritage Project



Rochdale Town Hall

Nominated by Donald Insall Associates



Rochdale Town Hall, one of the UK's most important 19th-century buildings, has been unlocked for 21st-century public use.

Despite facing many challenges, the project was delivered on time and on budget, transforming a tired civic building into one that imbues pride within the local community.

Extensive repair and restoration has been undertaken and previously unseen spaces are accessible for the first time.

Over 3600 volunteer, training and job opportunities were created and a heritage skills studio established. The public realm, once car parks, has been transformed into a multi-functional civic space offering a vibrant inclusive welcome.

This Grade I listed Victorian Gothic masterpiece designed by William H Crossland has been meticulously and sympathetically restored, including a series of design interventions which have been made to improve physical and intellectual access to this much-loved town hall.

This exemplar restoration project is pivotal to the heritage regeneration of the whole borough and has ensured that this important 19th century building has its future secured and is now a place of pride for the Rochdale community.

Kerry Gibbs MRICS
Heritage Lead Judge

Rochdale Town Hall

Nominated by Hugh Broughton Architects



Land Management & Sustainable Development

Category Sponsor



Shortlisted

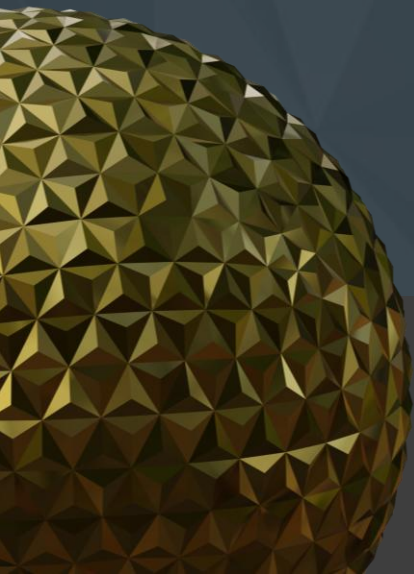
This category celebrates best practice in the stewardship and management of land, and in the planning and delivery of development in a way that helps achieve the economic, social, environmental, and cultural elements of the Sustainable Development Goals (SDGs).

Langford Lowfields, Newark

Soldiers Centre, Alexander Barracks, Pirbright

The Parks, Herefordshire

Water Secondment, Bromsgrove Schemes, Bromsgrove





Winner Land Management & Sustainable Development



Langford Lowfields, Newark

Nominated by Tarmac Trading



Langford Lowfields Nature Reserve marks the culmination of a strategic minerals estate land management and sustainable development project that was first conceived in the 1980s.

A three-way partnership bringing together the expertise of Tarmac, Trinity College, Cambridge and the RSPB, it has demonstrated how exceptional planning and land management vision can combine the commercial imperatives of mineral operations with achieving long-term, ecological goals.

The recent successful transfer of ownership of the nature reserve to the RSPB establishes a lasting legacy which, alongside the ecological benefits, provides a valuable amenity for health and wellbeing, leisure and education.

The Langford Lowfield Project showcased how long-term planning and collaboration can deliver essential minerals and provide progressive restoration to a unique habitat for birds.

It is a testament to the long-term vision and collaboration of landowners Tarmac Trading, Trinity College Cambridge and the Royal Society for the Protection of Birds (RSPB) that a 120ha wetland nature reserve has been created within an operational sand and gravel quarry.

The RICS judges were hugely impressed by the scheme and the enthusiasm of those who are delivering the project, from the quarry staff to the RSPB staff and volunteers. This is an exemplar in land management and sustainable development.

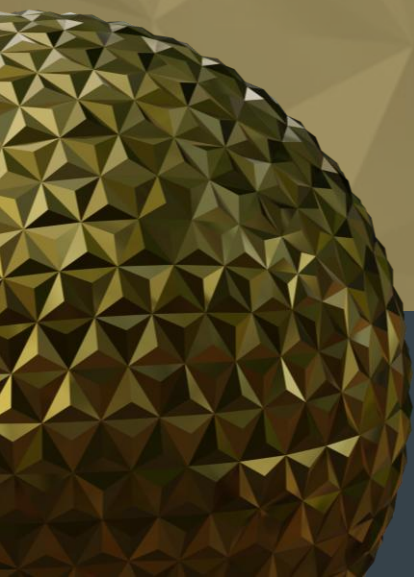
David Sandbrook FRICS

Langford Lowfields, Newark

Nominated by Tarmac Trading



Public Sector



Category Sponsor





Shortlisted

The Public Sector Project category celebrates an exceptional public sector project. From schools, hospitals, and leisure centres through to our roads, rail and tunnels, these projects influence and shape our built environment.

Institute of Technology, Loughborough College

Daphne Steele Building, University of Huddersfield

Army Head Quarters, Andover

Citizen Housing, Solihull

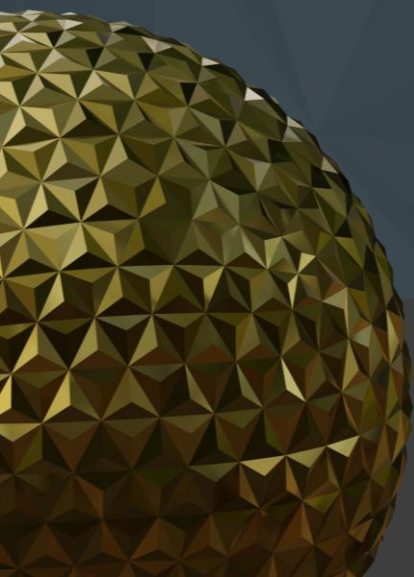
Parkhead Health, Social Care and Community Hub, Glasgow

College of Arts & Society, Coventry University

Dunfermline Learning Campus, Dunfermline

The Hard Interchange, Portsmouth

The Portico GP Surgery, Hackney





Winner

Public Sector Project



Parkhead Health, Social Care and Community Hub, Glasgow

Nominated by Hub South West Scotland



Parkhead Hub is the largest primary care facility in the Country supporting the North East locality of Glasgow by improving local access to health, social care and community-based services.

Through the construction period the project has delivered over £19.5M in social value and supported a number of local community projects.

The design material palette with offers a robust, yet warm high quality materials complemented by generous areas of soft landscaping.

This will be NHS Greater Glasgow and Clyde's first net zero in operation facility and will support a wide range of health and community services within a bright, welcoming and modern environment.

This ground-breaking net zero healthcare and community facility is transforming the service delivery in the East of Glasgow benefitting over 176,000 people.

The hub brings together a comprehensive range of services across acute, primary care, mental health, children's services, addiction support, homelessness assistance and many more needed activities into a single accessible location.

Community involvement is enhanced with priority given to local councils, voluntary groups and even includes the Parkhead Library. Scotland's first net zero operational facility, no fossil fuels are used in the building is used as an exemplar and a blueprint for the way forward in Scotland for the delivery of health and related services.

Richard Moxon BSc FRICS
Public Sector Lead Judge

Parkhead Health, Social Care and Community Hub Glasgow

Nominated by Hub West Scotland



Refurbishment & Revitalisation

Category Sponsor





Shortlisted

The Refurbishment/Revitalisation Project category honours an outstanding restoration/part restoration of a building that was no longer fit for purpose with the aim of making it more energy efficient and sustainable.

Walthamstow's Former Granada Cinema, London

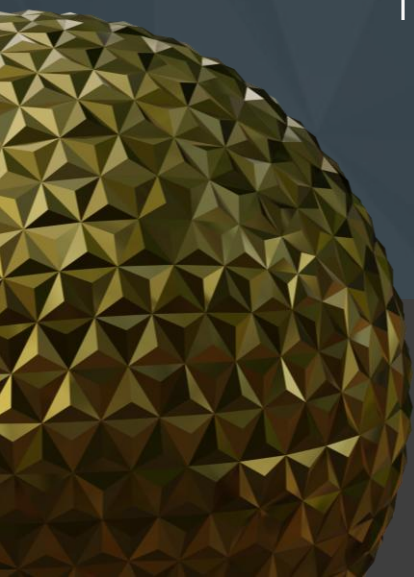
Stephenson Building, Newcastle University

The Story, Mount Oswald, Durham

Design & Digital Arts Building, Nottingham Trent University

The Estate Office, Englefield Estate Yard, Reading

The Glasshouse at the Walled Garden, Helen's Bay





Winner

Refurbishment/Revitalisation



Stephenson Building, Newcastle University

Nominated by Identity Consult



The Stephenson Building at Newcastle University brings multiple engineering disciplines together under one roof in the form of a world class hub for engineering excellence and cross-disciplinary collaboration and industry partnerships.

Located in the heart of the Newcastle University campus, the redeveloped building spans 198,000 square feet and features extraordinary research spaces, a student-run maker space and both specialist and multi-purpose education spaces along with technical workshops and support.

With a focus on digital manufacturing, sustainable propulsion and biomedical engineering, this hub is now a beacon for world leading education, research and collaboration.

The project sought to reinvigorate the existing outdated and inefficient 1950s engineering block with a future-proofed refurbishment and a dramatic extension, expanding the floor area to house seven engineering disciplines.

The new vibrant atrium is central to highly functional study, workshop and collaboration spaces, letting in natural light and visibility across floors, reflecting the open and cross-disciplinary nature of the faculty.

The welcoming, bright and well-designed accommodation has attracted a marked increase in female students, generated more research funding and led to best practice sharing amongst universities. The transformative highly sustainable refurbishment and revitalisation of the faculty is well deserving of category winner.

Saba Nayab BSc FRICS
Refurbishment/Revitalisation Lead Judge

Stephenson Building, Newcastle University

Nominated by Identity Consult



Residential Development

Category Sponsor



Shortlisted

The Residential Project category honours an outstanding residential development of either a single building or overall project, new build, or conversion.

Ebury Estate Regeneration, Westminster

The Cocoa Works, Clifton

Ross Street Mews, Belfast

The Parks, Herefordshire

Hazelmead, Bridport

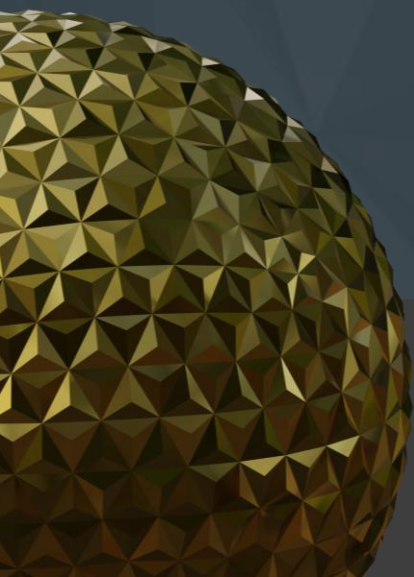
Lowfield Green, York

Noele Gordon House, London

Thie Clag, Douglas

Water Row, Glasgow

Western Villages, Edinburgh





Winner Residential Development



Ebury Estate Regeneration, London

Nominated by Astudio and Westminster City Council



The Ebury Estate Regeneration project in Westminster delivers a significant contribution to the borough's housing needs, targeting 50% affordable housing while ensuring high-quality living environments.

The design prioritizes well-proportioned homes with generous ceiling heights, dual-aspect layouts, and no single-aspect north-facing units.

Public spaces are thoughtfully enhanced to create inclusive, safe, and vibrant environments for all ages.

The scheme integrates retail and non-residential uses to support the community, alongside extensive urban greening. New planting and the retention of Category A trees reinforces a sustainable, nature-led approach, making this development a benchmark for socially and environmentally conscious regeneration.

The project brought together a wide range of local stakeholder groups, working closely with existing residents to ensure their needs were genuinely understood and addressed - both individually and collectively - through community-led design workshops.

This collaborative process shaped the first phase of the development, creating an open and welcoming environment that fostered social interaction and enhanced safety through thoughtful landscaping and well-considered building layouts.

The scheme delivered mixed-tenure housing, including homes for returning residents, helping to strengthen and rebuild the original community. It also achieved a significant reduction in carbon footprint compared to the former estate by adopting a fabric-first approach, supported by innovative technologies, sustainable M&E systems, and the use of high-quality, durable materials.

The result is a standout example of residential regeneration: delivering high-quality homes, revitalising the local area, and demonstrating what can be achieved through collaboration, innovation, and strong teamwork.

Sean Farrell FRICS
Residential Development Lead Judge

Ebury Estate Regeneration, London

Nominated by Astudio and
Westminster City Council



Environmental Impact

Category sponsor





Shortlisted

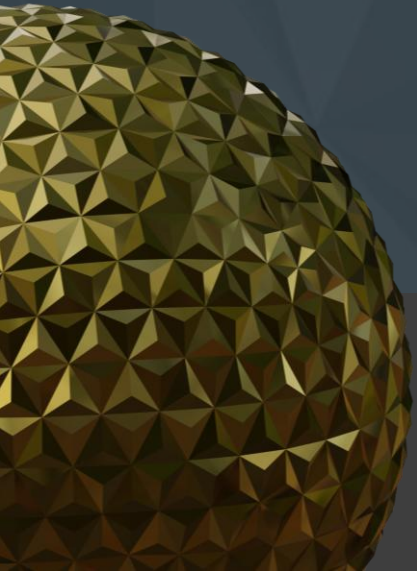
This category recognises projects where innovation, design or construction techniques have been utilised to address environmental challenges and improve sustainability.

York Minster, York

The Natural History Museum, London

Colwick (Holme Sluices) Fish Pass, Colwick Country Park

Welcome Building, Bristol





Highly Commended Environmental Impact



York Minster

Nominated by York Minster



184 solar panels on the roof of York Minster were installed on the south Quire roof between October and December 2024. The panels are now generating >70,000 kWh of energy, enough to deliver a third of the Minster's electricity requirements.

The solar panel installation is one of many projects underway across the Minster as part of its Neighbourhood Plan. The plan, which has recently attracted international awards for innovation, is designed to address the challenges of the 21st century, principally responding to the climate emergency and the impacts of climate change on the fragile gothic masterpiece and its estate.

This year's Highly Commended Award for Environmental Impact goes to a project that has shown true leadership in proving how even the most historic buildings can play their part in tackling the climate crisis.

At York Minster – one of the world's greatest Gothic cathedrals, a Grade I listed building and Scheduled Monument – 184 discreetly installed solar panels on the South Quire roof are now generating more than 70,000 kWh of clean electricity each year. This delivers around a third of the Minster's power and cuts over 11 tonnes of carbon annually.

The achievement lies not only in the energy savings but also in the way the project overcame complex planning challenges. Guided by the Localism Act and the York Minster Precinct Neighbourhood Plan, the Chapter and project team worked with City of York Council, Historic England and the local community to secure approval for renewable energy on an internationally recognised heritage site.

The outcome was minimal visual impact but a powerful statement: if solar technology can be sensitively integrated here, it can be done anywhere.

The judges praised the Minster's moral duty to act on climate change, its leadership in aligning with UN Sustainable Development Goals, and its precedent for sustainable innovation worldwide.

York Minster

Nominated by York Minster

Mike Ward FRICS FCABE MICWCI CEnv
Environmental Impact Lead Judge



Winner

Environmental Impact



The Natural History Museum, London

Nominated by The Natural History Museum



The Museum's South Kensington five-acre gardens have been transformed into a welcoming, accessible and biologically diverse green space with new outdoor galleries providing a place for visitors, researchers, and scientists to learn about Earth's changing biological diversity.

With ambitious and demanding KPIs, creating a highly accessible and sustainable design has been at the heart of this low carbon redevelopment.

The project's sustainable construction methods has been widely recognised, awarded the Silver Prize for Europe at the Holcim Foundation Awards for Sustainable Construction 2023.

The Urban Nature Project at the Natural History Museum has turned previously underused gardens into a vibrant, accessible landscape – a haven for people and wildlife, and a living laboratory for science and education.

The project team embraced innovation and sustainability at every stage: delivering a diesel-free, zero-waste-to-landfill construction, embedding passive low-carbon design, and restoring diverse habitats including woodland, wetland, and grassland.

Equally impressive has been the teamwork behind the scheme all working together to create a space that not only inspires over a million visitors each year, but also sets new benchmarks for inclusive design, wellbeing, and urban biodiversity.

For its vision, innovation, and outstanding environmental leadership, the RICS Environmental Impact Award 2025 goes to the Urban Nature Project at the Natural History Museum.

Mike Ward FRICS FCABE MICWCI CEnv
Environmental Impact Lead Judge

The Natural History Museum, London

Nominated by The Natural History Museum



Infrastructure

Category sponsor



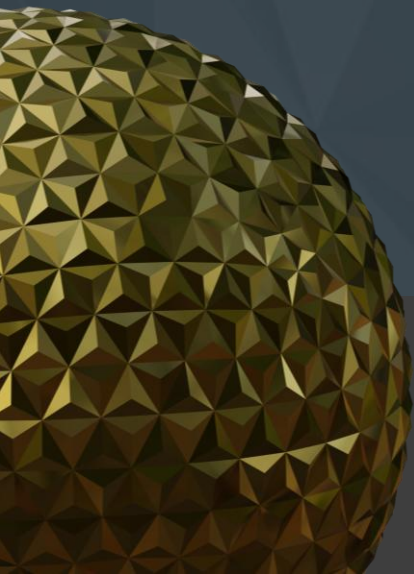
Shortlisted

This category celebrates the contribution of a team to the delivery of exceptional infrastructure projects. This will include basic structures, systems, and services required for operation.

The Thames Tideway Tunnel, London

Kirkstone Pass, Ambleside

Wildanet Project Lux, Cornwall





Winner

Infrastructure Project



The Thames Tideway Tunnel, London

Nominated by Tideway



The Tideway project is the UK's single greatest intervention to tackle sewage pollution. The Thames Tideway Tunnel, London's 'super sewer', will dramatically improve water quality in the tidal Thames and provide critical infrastructure for the capital's future resilience.

Main construction is complete and commissioning has begun. The project is hitting its headline delivery targets: it's on track to be delivered according to the timeframe set when the project began in 2015 and within the predicted annual cost range for water billpayers.

The project is also leaving a lasting above-ground legacy with three acres of world class public realm.

Thames Tideway impressed the judges with its transformative impact on London's infrastructure and environment. As one of the UK's most ambitious infrastructure mega-projects, it tackles centuries-old pollution in the River Thames, significantly enhancing water quality and urban resilience. The project exemplifies excellence in client leadership, safety, and the partnership between private funding and industry to deliver infrastructure for public good for decades to come.

The role of the surveyor was central to the successful delivery of the programme—spanning commercial management, property services, and multiple other disciplines. Thames Tideway also leads the way in sustainable design, community collaboration, and delivering long-term social value. The project integrates heritage preservation with cutting-edge engineering, setting new standards for infrastructure delivery.

Its legacy will benefit generations, making it a model for responsible, future-focused infrastructure development.

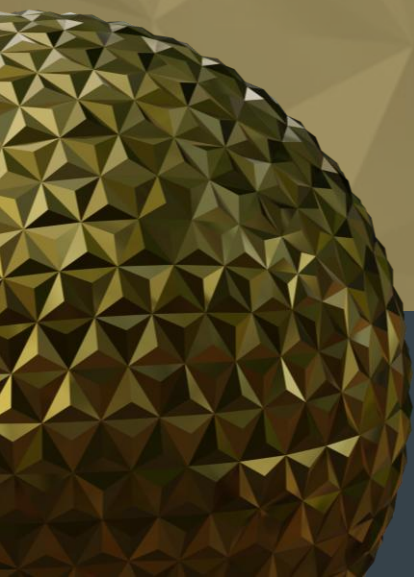
Jeevani Subasinghe CEng FICE MRICS
UK National Awards Infrastructure Award Lead Judge

The Thames Tideway Tunnel

Nominated by Tideway



Outstanding Contribution to Surveying by an SME



Category sponsor





Shortlisted

This category recognises an outstanding small surveying firm (<50 employees), or a firm with under 50 employees/a surveying team working within an organisation with under 50 employees.

Honeywell Survey & Design Ltd

Air Building Consultancy Limited

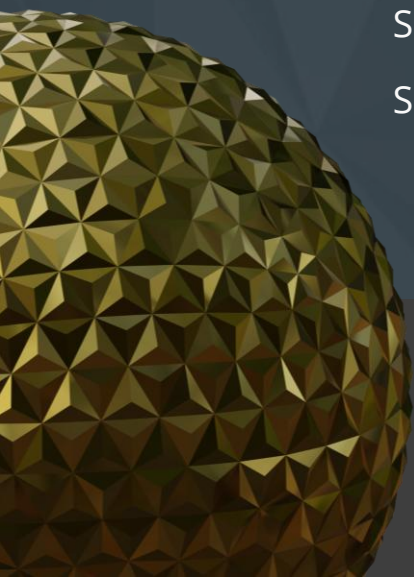
Ekkist

Magnitude Quantity Surveyors Ltd

River Crest Surveyors & Valuers

Scafol Surveying Solutions

SHARP Contract & Surveying Ltd - Gull Wing Bridge





Winner Outstanding Contribution to Surveying by an SME



Ekkist



Ekkist is the UK's first health and well-being consultancy for the built environment, advising on design and operations of buildings to support human health.

In 2024, major residential developers including L&G, Clarion, Almacantar and Igloo Regeneration adopted the Ekkist Healthy Homes Checklist highlighting success in our ongoing mission to improve the standard of British housing.

Ekkist completed a WELL Platinum scheme for Landsec, consulted on the UK's first WELL for Residential scheme, worked on high profile WELL projects and innovative bespoke projects using the Ekkist Design for Well-being Framework, as well as speaking at major industry events.

Ekkist, a profound small surveying firm which has topped this year's award for its outstanding contribution to the profession through its commitment to professionalism, collaboration, innovation, and sustainability.

Not only have surveyors in the team actively co-written and contributed to articles such as RICS Guidance and Standards they have taken the time to out of their day-to-day business initiatives to support and guide new and existing surveyors across the UK and beyond that has truly benefitted the wider profession.

Their diverse skillsets and inclusive approach foster strong stakeholder relationships, while their business model challenges conventional thinking by prioritising human health in building design.

Though revenue is not their primary focus, they consistently exceed professional standards and deliver impactful projects.

Ekkist integrates sustainability and social value into its work, promoting environmental awareness and well-being, and exemplifies resilience and leadership in addressing industry challenges.

A large, golden, geometric sphere with a faceted, crystalline texture, positioned in the bottom left corner of the slide.

Ekkist

Selina Baptiste MRICS
Outstanding contribution to surveying Award by an SME
Lead Judge



Outstanding Contribution to Surveying by a Large Firm

Category Sponsor

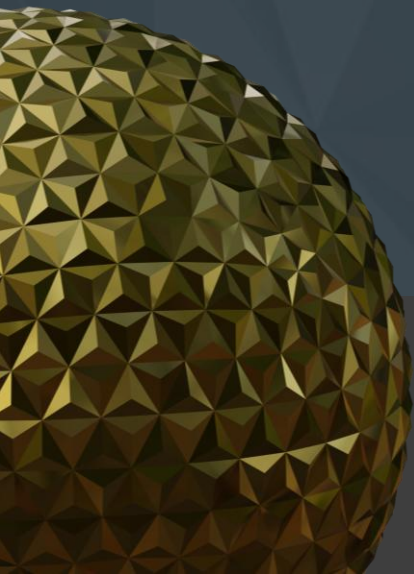


Shortlisted

This category recognises an outstanding small surveying firm or team with more than 50 employees.

Mott MacDonald CCQE (Cost, Commercial, Quantity Surveying and Estimating Team)

Transport for London, PCCCSE (Procurement & Commercial, Capital - Construction, Station Enhancements Team)





Winner Outstanding Contribution to Surveying by a Large Firm



Transport for London, PCCCSE (Procurement & Commercial, Capital, Construction, Station Enhancements Team)



The Transport for London, Procurement & Commercial, Capital, Construction, Station Enhancements Team has successfully redefined surveying's role in procurement, commercial strategy, and infrastructure delivery.

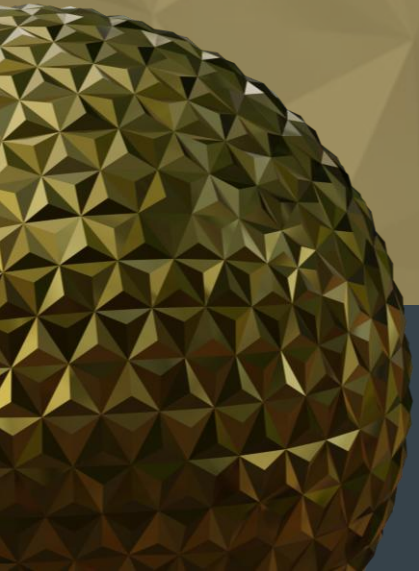
By integrating Early Contractor Involvement (ECI), innovative and incentive drive commercial models, risk sharing, and effective supply chain relationships, the team has set a new industry benchmark for commercial excellence in transport infrastructure.

Our work has delivered real cost savings, efficiency improvements, and sustainable outcomes, reinforcing our commitment to shaping the future of the UK's built environment.

Transport for London, PCCCSE (Procurement & Commercial, Capital, Construction, Station Enhancements Team)



Ambassador of the Year





Suki Bell FRICS



Anil Singh Rana
FRICS



Matthew Talliss
FRICS



Learie Gonsalves
FRICS



Deborah Israel



This Award acknowledges an extraordinary volunteer for their distinguished service in advancing the Institutions UK Advocacy & Influence agenda such as Sustainability, data and technology, diversity and inclusion, people and skills and places and spaces to ensure that built environment enables society to meet the challenges of the future.



Winner

Ambassador of the Year



Suki Bell FRICS



Suki's passion for RICS became evident from our first meeting when she tabled her thoughts and strategy for creating a new Local Member Group for the Birmingham area.

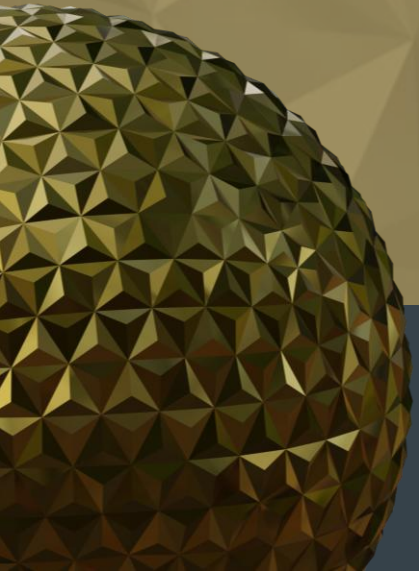
As a former Regional Board Member, Vice Chair and Chair of RICS West Midlands Suki's professionalism and commitment make her deserving of the Ambassador of the Year Award.

A large, textured, golden sphere is positioned on the left side of the slide, partially cut off by the edge. It has a faceted, crystalline appearance with many small, triangular facets.

Ambassador of the Year – Suki Bell



Lifetime Achievement





Lifetime Achievement



Julian Lyon FRICS



Julian's surveying career started 42 years ago in 1983 and has spanned many different specialisms including building surveying, investment, valuation, consulting and occupier advisory.

He is currently a senior director at Savills, leading the EMEA Occupier Strategy Advisory and is Chair of the CBI Property Group and the RICS Corporate Occupier Group.

Julian is a true ambassador for Diversity and Inclusion within the profession, working especially closely with the Savills Apprenticeship Programme Lead. Savills Apprenticeship Programme Lead has spoken of Julian's "unwavering commitment to recruiting and developing Future Talent for over a decade."

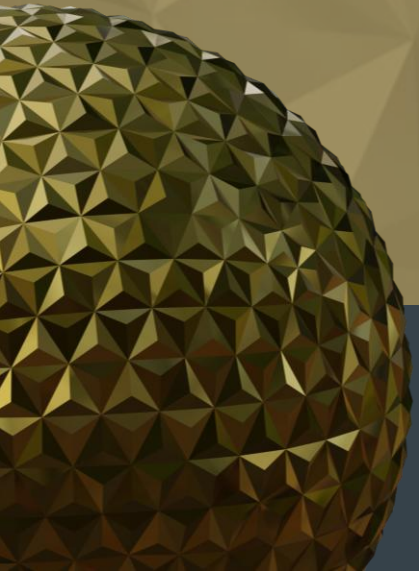
He has screened hundreds of applications, conducting countless interviews. "His positivity is infectious, and what truly sets him apart is his genuine desire to nurture and support the next generation. Julian doesn't just talk about investing in young talent, he lives it."

A large, textured, golden sphere is positioned on the left side of the slide, partially cut off by the edge. It has a faceted, crystalline appearance with many small, triangular facets.

Lifetime Achievement Winner – Julian Lyon FRICS



Project of the Year





Winner

Project of the Year



Stephenson Building, Newcastle University

Nominated by Identity Consult



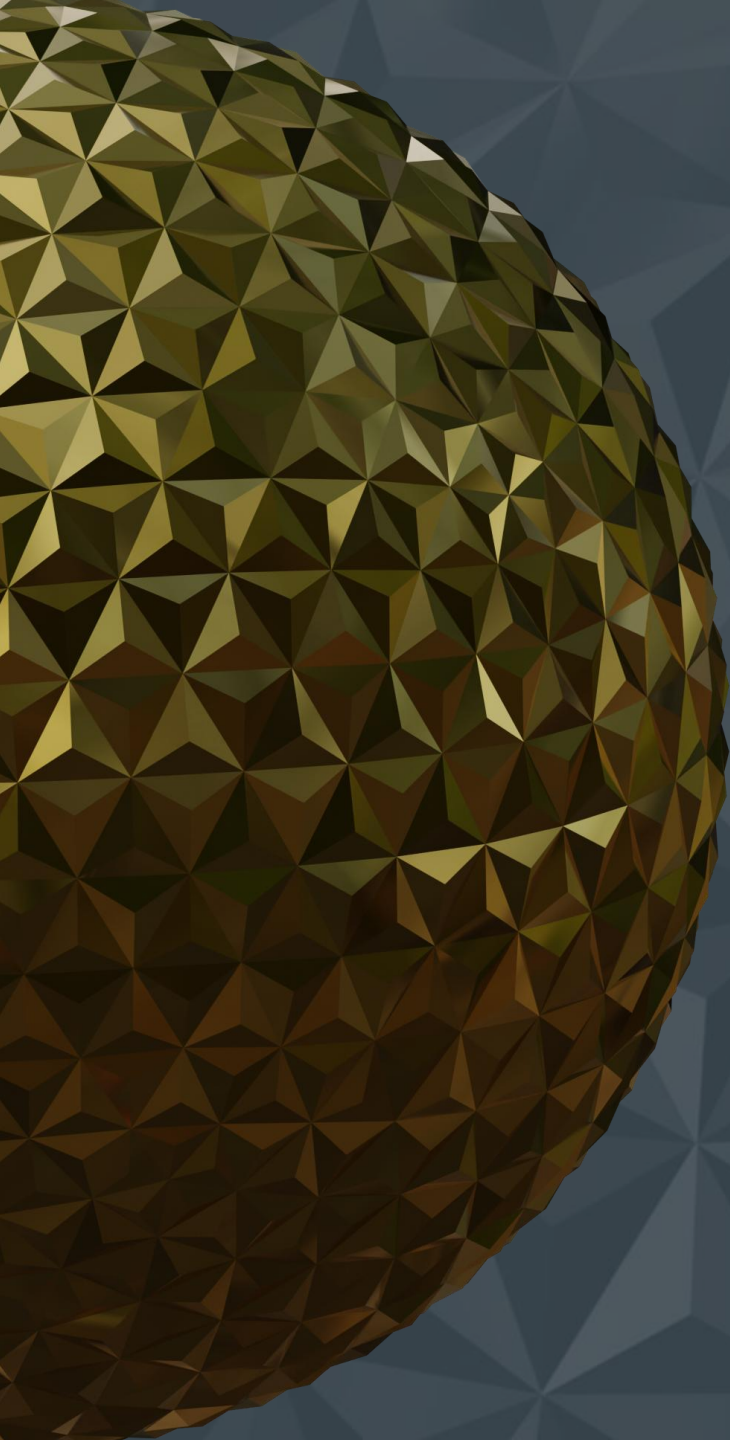
The Stephenson Building at Newcastle University brings multiple engineering disciplines together under one roof in the form of a world class hub for engineering excellence and cross-disciplinary collaboration and industry partnerships.

Located in the heart of the Newcastle University campus, the redeveloped building spans 198,000 square feet and features extraordinary research spaces, a student-run maker space and both specialist and multi-purpose education spaces along with technical workshops and support.

With a focus on digital manufacturing, sustainable propulsion and biomedical engineering, this hub is now a beacon for world leading education, research and collaboration.

Stephenson Building, Newcastle University

Nominated by Hugh Broughton Architects



UK
Grand Final