

UK
Grand Final
Winners



Kerry Gibbs MRICS
National Awards
Head Judge



Mandy Spenceley FRICS
Outstanding Contribution to Surveying
by a Medium/Large Firm Lead Judge



Selina Baptiste MRICS
Outstanding Contribution to
Surveying by an SME Lead Judge



Hugh Kemsley OBE FRICS
Community Benefit
Lead Judge



Richard Moxon FRICS
Commercial Development
Lead Judge



Saba Nayab FRICS
Refurbishment/Revitalisation
Lead Judge

Meet the 2025 UK Awards National Judging Panel



David Sandbrook FRICS
Land Management and Sustainable
Development Lead Judge



Sean Farrell FRICS
Residential Development
Lead Judge



Mike Ward FRICS
Environmental Impact
Lead Judge



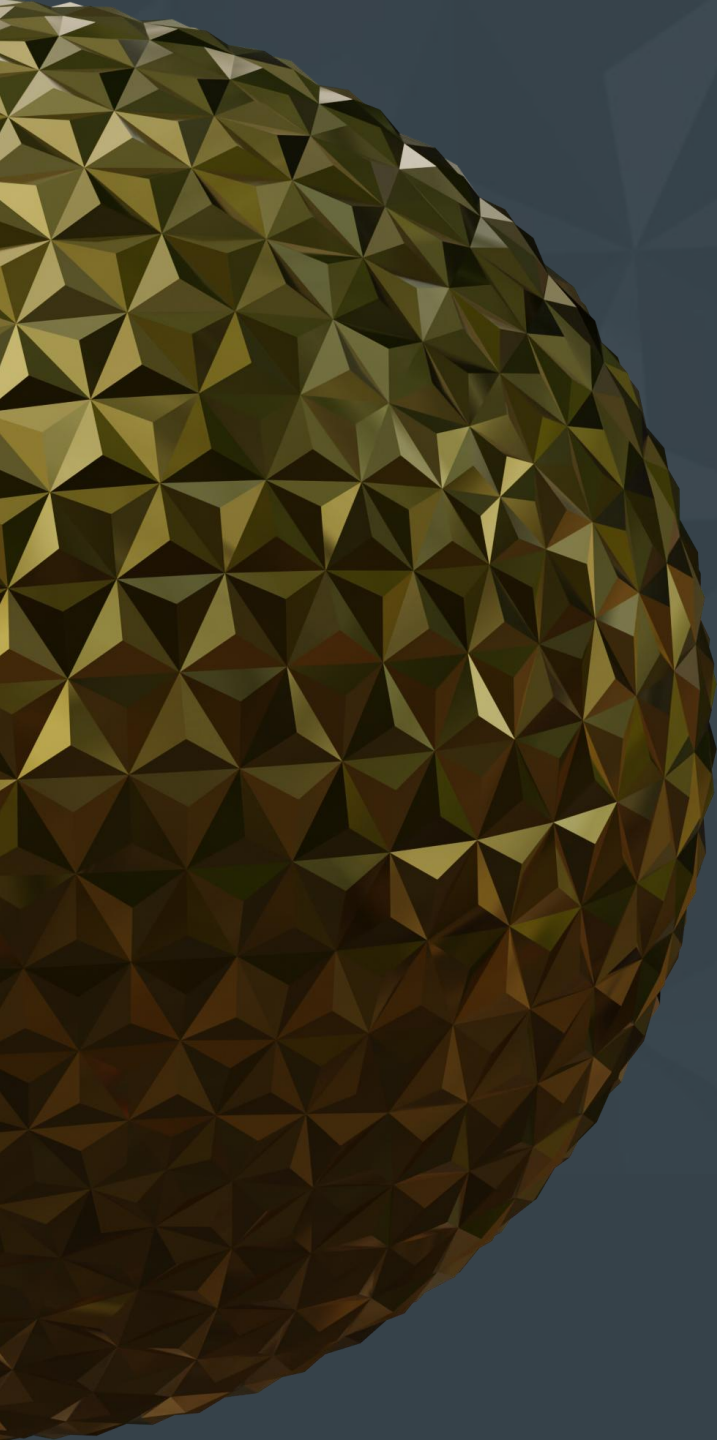
Jeevani Subasinghe MRICS
Infrastructure Lead Judge

A large, textured gold sphere with a faceted, geometric pattern, partially visible on the left side of the image.

Meet the UK Awards 2025 National Judging Panel



Thank you to our sponsors





Commercial Development Project



Shortlisted

The Commercial Development category is awarded to an outstanding commercial property development or initiative whether retail, office, industrial or mixed-use.

8 Bishopsgate, London c Turner and Townsend alinea

Co-Op Live Arena, Etihad Campus, Manchester nominated by Turner and Townsend

Fulham Pier, London nominated by Portview

HSBC Office, Leicester nominated by HSBC and

Melville Building, Royal William Yard, Plymouth nominated by Urban Splash

Welcome Building, Bristol nominated by Trammell Crow Company





RICS®

AWARDS
2025

Commercial Development

Highly Commended



8 Bishopsgate, London

Nominated by Turner and Townsend alinea



Project summary

8 Bishopsgate is a landmark 50-storey mixed-use tower in the heart of the City of London. Developed by Mitsubishi Estate and Stanhope PLC, the building provides office accommodation, retail spaces, extensive building amenities, and a public viewing gallery at level 50.

Situated in the Eastern Tall Building Cluster, it blends contemporary design with the City's historical context.

As the first London tower to achieve BREEAM Outstanding, it sets a new standard for sustainability.

The development supports the local economy by attracting businesses, creating jobs, and enhancing the area for residents, workers and visitors alike.

Judge's comments,

"This new 50 storey mixed use tower in the Eastern Tall Building Cluster provides mixed use accommodation including a public viewing gallery giving stunning views over the city and beyond. In achieving BREEAM Outstanding and innovative design features it sets new sustainability standards and is viewed as an exemplar for future tall towers.

Health and well-being is at the heart of the building and good levels of lettings are a testimony that the tower enhances the current office offer in the City but which also benefits the local community"

Richard Moxon FRICS
Commercial Development Lead Judge

8 Bishopsgate, London

Nominated by Turner and Townsend alinea



Commercial Development Winner



Welcome Building, Bristol

Nominated by Trammell Crow Company



Project summary

Welcome Building is a highly sustainable new workplace that significantly raises the bar within its sector. It stands out from the rest, from the highest industry credentials to harnessing innovation to not only deliver the project in an exemplary way but also ensure it operates as such.

This is a user-focused, wellbeing-led and inclusive scheme. Formed of low carbon materials, it has been delivered through a collaborative approach that drives efficiency and enables the building to operate as net zero.

Welcome Building represents the future of the workplace, establishing a new standard not just for the south-west but nationwide.

Judge's comments,

"Welcome Building is an exceptional development, from the outset the team shared the strategic vision which has delivered a workplace for the future.

Bristol now benefits from a building which has set a blueprint and benchmark in sustainability, wellbeing and community.

Set over nine floors this net zero building has enhanced the local area and raised the bar within its sector, innovations such as linking the building to the Bristol Heat Network and numerous wellbeing initiatives mark the way forward and to the future of commercial development."

Richard Moxon FRICS
Commercial Development Lead Judge

Welcome Building, Bristol

Nominated by Trammell Crow Company



Community Benefit Project

Category Sponsor





Shortlisted

The Community Benefit category recognises outstanding achievement in providing a facility that directly benefits the local community. The project must illustrate its success through local community feedback with diversity and inclusion embedded throughout.

Community Diagnostic Centre, Gateshead nominated by AtkinsRéalis

Gasyard Heritage and Exhibition Centre, Derry nominated by Gravity Architects

Knightsbridge Step-Free Access Works, London nominated by Transport for London

Midland Metropolitan University Hospital, Smethwick nominated by Gleeds

Rochdale Town Hall nominated by Donald Insall Associates

Royal William Yard, Plymouth nominated by Urban Splash

Category Sponsor





Shortlisted continued

The Community Benefit category recognises outstanding achievement in providing a facility that directly benefits the local community. The project must illustrate its success through local community feedback with diversity and inclusion embedded throughout.

Sandgate School, Kendal nominated by Westmorland and Furness Council

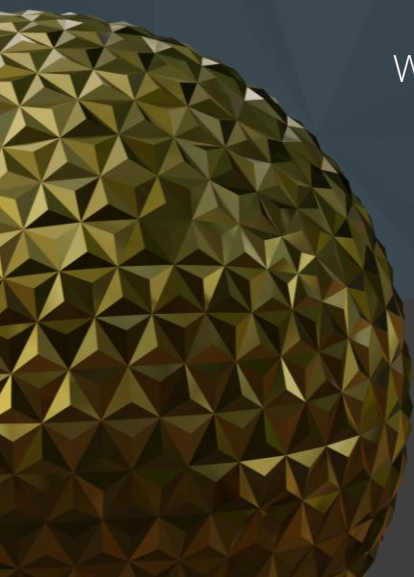
Shankill Shared Women's Centre, Belfast nominated by TODD Architects

Sherwood Observatory, Nottingham nominated by Anotherkind Architects

Tiber Community Building, Liverpool nominated by Krol Corlett Construction

Tustin Estate, London nominated by Pulse Consult

Walthamstow's Former Granada Cinema, London nominated by London Borough of Waltham Forest



Category Sponsor





Community Benefit

Highly Commended



Sherwood Observatory, Nottingham

Nominated by AnotherKind Architects

Category Sponsor





Project summary

The new state-of-the-art Science Discovery Centre and Planetarium development at Sherwood Observatory has created a landmark building for Nottinghamshire and reinvigorated STEM education in the region by inspiring a new generation of scientists and engineers, as well as supporting future job growth.

The new development delivers an immersive and unique educational experience for all ages that will attract visitors from across the East Midlands and beyond to Ashfield for years to come.

Judge's comments,

"This outstanding project, undertaken by a relatively small charity, makes inspired use of a redundant underground reservoir which has been converted for exhibition purposes.

Above this a new building contains reception areas, a café and a state-of-the-art planetarium.

Overall, the complex is a very popular visitor attraction and makes a significant contribution to education in science for the region."

Hugh Kemsley OBE FRICS
Community Benefit Lead Judge

Sherwood Observatory, Nottingham

Nominated by AnotherKind Architects

Category Sponsor





Community Benefit Winner



Shankill Shared Women's Centre, Belfast

Nominated by TODD Architects

Category sponsor





Project summary

The Shankill Shared Women's Centre in North & West Belfast is a purpose-built facility for women and families from all communities. Spanning 3,250m² across three floors, it includes a multi-purpose hall, nursery, education rooms, youth units, health facilities, and a café.

Funded through the EU PEACE IV Programme, the centre promotes social cohesion and offers services focused on education, wellbeing, and youth empowerment.

Designed by TODD Architects and project managed by W H Stephens, it provides a welcoming, safe, and inclusive environment.

Since its 2024 completion, it has become a hub for personal development, community connection, and growth.

Judge's comments,

"In 1987, eight inspired women felt that they had missed out on their education due to the troubles and formed this organisation to provide facilities to help women from cradle to grave.

This new centre is providing a full range of activities for women of all ages, including a nursery for children of pre-school age, educational and health activities, particularly strong for teenagers and good spaces for outside organisations to rent.

This outstanding project was borne out of the community with individuals from that community involved in all stages of the development."

Hugh Kemsley OBE FRICS
Community Benefit Lead Judge

Shankill Shared Women's Centre, Belfast

Nominated by TODD Architects





Heritage Project



Shortlisted

The Heritage Project category honours excellent work in the conservation of a single building or a group of buildings or structures and covers renovation or conversion to a new or original use.

Edinburgh Futures Institute, University of Edinburgh nominated by AtkinsRéalis

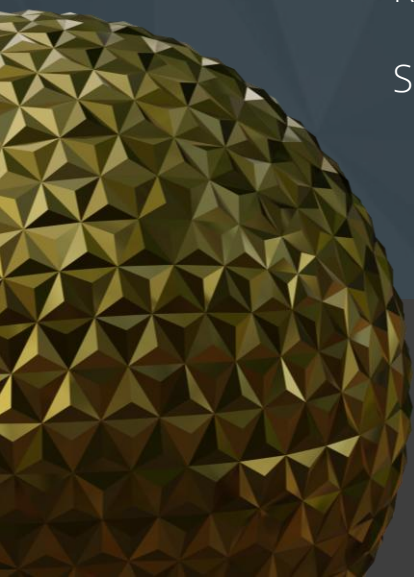
Elizabeth Tower, London nominated by Purcell

Ivy Lodge, Cirencester nominated by The Bathurst Estate

Rochdale Town Hall nominated by Donald Insall Associates

Rosslyn Castle, Roslin nominated by Page\Park Architects

Soane Stable Yard, Royal Hospital Chelsea, London nominated by Peregrine Bryant Architects





Shortlisted continued

The Heritage Project category honours excellent work in the conservation of a single building or a group of buildings or structures and covers renovation or conversion to a new or original use.

The Buttermarket, Redruth nominated by Architectural Thread

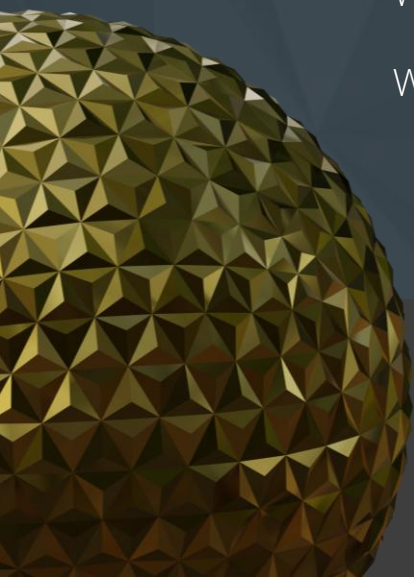
The Compass Point Project, The Storm Tower, Bude nominated by Trevor Humphreys Associates

The Rising at Raby Castle, Park and Gardens, Darlington nominated by Raby Estates

V & A Museum, Madejski Courtyard, London nominated by DBR

Walthamstow's Former Granada Cinema, London nominated by London Borough of Waltham Forest

Walworth Town Hall, London nominated by Feix and Merlin Architects





Heritage

Winner



Rochdale Town Hall, Rochdale

Nominated by Donald Insall Associates



Project summary

Rochdale Town Hall, one of the UK's most important 19th century buildings, has been unlocked for 21st-century public use.

Despite facing many challenges, the project was delivered on time and on budget, transforming a tired civic building into one that imbues pride within the local community.

Extensive repair and restoration has been undertaken, and previously unseen spaces are accessible for the first time.

Over 3600 volunteer, training and job opportunities were created and a heritage skills studio established. The public realm, once car parks, has been transformed into a multi-functional civic space offering a vibrant inclusive welcome.

Judge's comments,

"This Grade I listed Victorian gothic masterpiece designed by William H Crossland has been meticulously and sympathetically restored, including a series of design interventions which have been made to improve physical and intellectual access to this much-loved town hall.

This exemplar restoration project is pivotal to the heritage regeneration of the whole borough and has ensured that this important 19th century building has its future secured and is now a place of pride for the Rochdale community."

Kerry Gibbs MRICS
Heritage Lead Judge

Rochdale Town Hall

Nominated by Donald Insall Associates



Land Management & Sustainable Development Project



Shortlisted

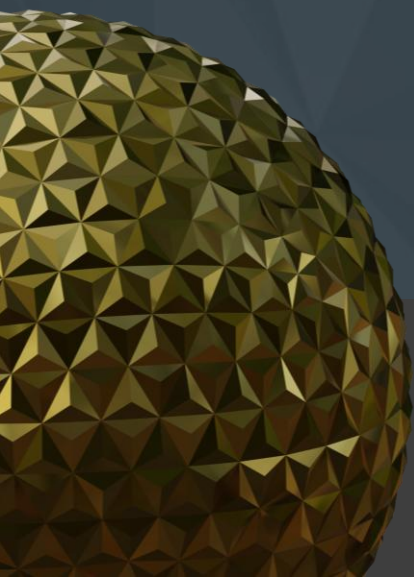
This category celebrates best practice in the stewardship and management of land, and in the planning and delivery of development in a way that helps achieve the economic, social, environmental, and cultural elements of the Sustainable Development Goals (SDGs).

Langford Lowfields, Newark nominated by Tarmac Trading

Soldiers Centre, Pirbright nominated by Henry Brothers

The Parks, Herefordshire nominated by Stolon Studio

Water Secondment, Bromsgrove Schemes nominated by Mott MacDonald





Land Management and Sustainable Development Winner



Langford Lowfields, Newark

Nominated by Tarmac Trading



Project summary

Langford Lowfields Nature Reserve marks the culmination of a strategic mineral's estate land management and sustainable development project that was first conceived in the 1980s.

A three-way partnership bringing together the expertise of Tarmac, Trinity College, Cambridge and the RSPB, it has demonstrated how exceptional planning and land management vision can combine the commercial imperatives of mineral operations with achieving long-term, ecological goals.

The recent successful transfer of ownership of the nature reserve to the RSPB establishes a lasting legacy which, alongside the ecological benefits, provides a valuable amenity for health and wellbeing, leisure and education.

Judge's comments,

"The project showcased how long-term planning, and collaboration can deliver essential minerals and provide progressive restoration to a unique habitat for birds.

It is a testament to the long-term vision and collaboration of landowners Tarmac Trading, Trinity College Cambridge and the Royal Society for the Protection of Birds (RSPB) that a 120-hectare wetland nature reserve has been created within an operational sand and gravel quarry.

We were hugely impressed by the scheme and the enthusiasm of those who are delivering the project, from the quarry staff to the RSPB staff and volunteers. This is an exemplar in land management and sustainable development."

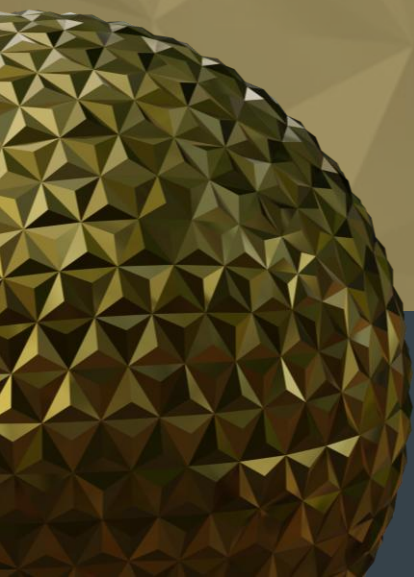
David Sandbrook FRICS
Land Management and Sustainable Development
Lead Judge

Langford Lowfields, Newark

Nominated by Tarmac Trading



Public Sector Project



Category sponsor





Shortlisted

The Public Sector Project category celebrates an exceptional public sector project. From schools, hospitals, and leisure centres through to our roads, rail and tunnels, these projects influence and shape our built environment.

Citizen Housing, Solihull nominated by Citizen Housing

College of Arts and Society, Coventry University nominated by BDP

Community Diagnostic Centre, Gateshead nominated by AtkinsRéalis

Daphne Steele Building, University of Huddersfield's National Health Innovation Campus nominated by Gleeds

DIO Single Living Accommodation Alliance Framework, Andover nominated by Arcadis

Dunfermline Learning Campus nominated by Fife Council

Category sponsor





Shortlisted continued

The Public Sector Project category celebrates an exceptional public sector project. From schools, hospitals, and leisure centres through to our roads, rail and tunnels, these projects influence and shape our built environment.

Edinburgh Futures Institute, University of Edinburgh nominated by AtkinsRéalis

Institute of Technology, Loughborough College nominated by Thornton Firkin

Parkhead Health, Social Care and Community Hub, Glasgow nominated by Hub West Scotland

Rochdale Town Hall nominated by Donald Insall Associates

The Hard Interchange, Bus Apron Replacement Scheme, Portsmouth nominated by Atkins Realis

The Portico GP Surgery, Hackney nominated by The London Borough of Hackney

Category sponsor





Public Sector Winner



Parkhead Health, Social Care and Community Hub, Glasgow

Nominated by Hub West Scotland

Category sponsor





Project summary

Parkhead Hub is the largest primary care facility in Scotland supporting the Northeast locality of Glasgow by improving local access to health, social care and community-based services.

Through the construction period the project has delivered over £19.5m in social value and supported several local community projects.

The design material palette with offers a robust, yet warm high-quality materials complemented by generous areas of soft landscaping.

This will be NHS Greater Glasgow and Clyde's first net zero in operation, facility and will support a wide range of health and community services within a bright, welcoming and modern environment.

Judge's comments,

"This ground-breaking net zero healthcare and community facility is transforming the service delivery in the Northeast of Glasgow benefitting over 176,000 people.

The hub brings together a comprehensive range of services across acute, primary care, mental health, children's services, addiction support, homelessness assistance and many more needed activities into a single accessible location.

Community involvement is enhanced with priority given to local councils, voluntary groups and even includes the Parkhead Library. Scotland's first net zero operational facility, no fossil fuels are used in the building is used as an exemplar and a blueprint for the way forward in Scotland for the delivery of health and related services."

Richard Moxon FRICS
Public Sector Lead Judge

Parkhead Health, Social Care and Community Hub, Glasgow

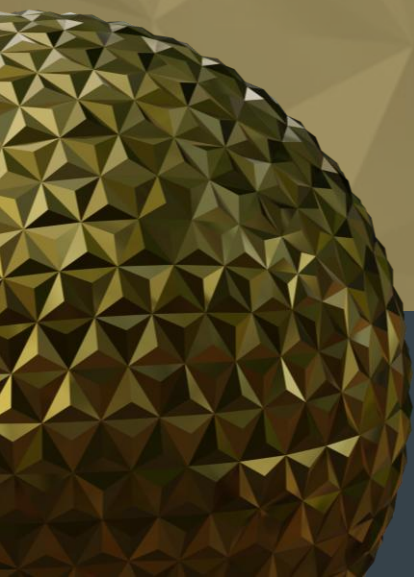
Nominated by Hub West Scotland

Category sponsor





Refurbishment & Revitalisation Project



Category sponsor





Shortlisted

The Refurbishment/Revitalisation Project category honours an outstanding restoration/part restoration of a building that was no longer fit for purpose with the aim of making it more energy efficient and sustainable.

Colwick Home Sluices Refurbishment, Nottingham nominated by Jackson Civil Engineering

Community Diagnostic Centre, Gateshead nominated by AtkinsRéalis

Design and Digital Arts Building, Nottingham Trent University nominated by Turner and Townsend

Sherwood Observatory, Nottingham nominated by Anotherkind Architects

Stephenson Building, Newcastle University nominated by Identity Consult

The Cocoa Works, Clifton nominated by Henry Boot Construction

Category sponsor





Shortlisted continued

The Refurbishment/Revitalisation Project category honours an outstanding restoration/part restoration of a building that was no longer fit for purpose with the aim of making it more energy efficient and sustainable.

The Estate Office, Englefield Estate Yard, Reading nominated by The Englefield Estate

The Glasshouse at the Walled Garden, Helen's Bay nominated by APD Architects

The Parks, Herefordshire nominated by Stolon Studio

The Story, Mount Oswald, Durham nominated by Ryder Architecture

Thie Clag, Douglas nominated by Manx Development Corporation

Walthamstow's Former Granada Cinema nominated by London Borough of Waltham Forest

Category sponsor





Refurbishment/Revitalisation Winner



Stephenson Building, Newcastle

Nominated by Identity Consult

Category sponsor





Project summary

The Stephenson Building at Newcastle University brings multiple engineering disciplines together under one roof in the form of a world class hub for engineering excellence and cross-disciplinary collaboration and industry partnerships.

Located in the heart of the Newcastle University campus, the redeveloped building spans 198,000 square feet and features extraordinary research spaces, a student-run maker space and both specialist and multi-purpose education spaces along with technical workshops and support.

With a focus on digital manufacturing, sustainable propulsion and biomedical engineering, this hub is now a beacon for world leading education, research and collaboration.

Judge's comments,

"The project sought to reinvigorate the existing outdated and inefficient 1950s engineering block with a future-proofed refurbishment and a dramatic extension.

The new vibrant atrium is central to highly functional study, workshop and collaboration spaces, letting in natural light and visibility across floors, reflecting the open and cross-disciplinary nature of the faculty.

The welcoming, bright and well-designed accommodation has attracted a marked increase in female students, generated more research funding and led to best practice sharing amongst universities. The transformative highly sustainable refurbishment and revitalisation of the faculty is well deserving of category winner."

Saba Nayab FRICS
Refurbishment & Revitalisation Lead Judge

Stephenson Building, Newcastle University

Nominated by Identity Consult

Category sponsor





Residential Development Project



Shortlisted

The Residential Project category honours an outstanding residential development of either a single building or overall project, new build, or conversion.

Ebury Estate Regeneration, Westminster nominated by astudio and Westminster City Council

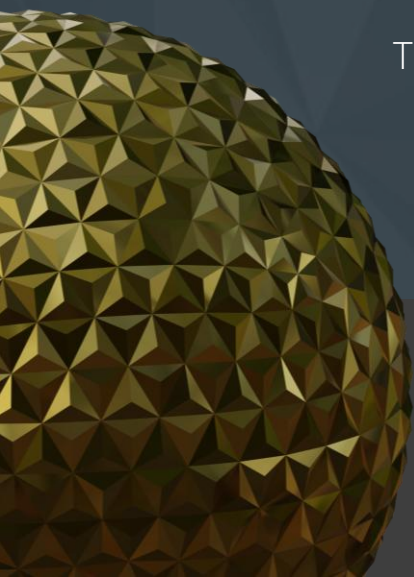
Hazelmead, Bridport nominated by Barefoot Architects

Lowfield Green, York nominated by BDP

Noele Gordon House, London nominated by Mae

Ross Street Mews, Belfast nominated by Studiorogers Architects

The Cocoa Works, Clifton nominated by Henry Boot Construction





Shortlisted continued

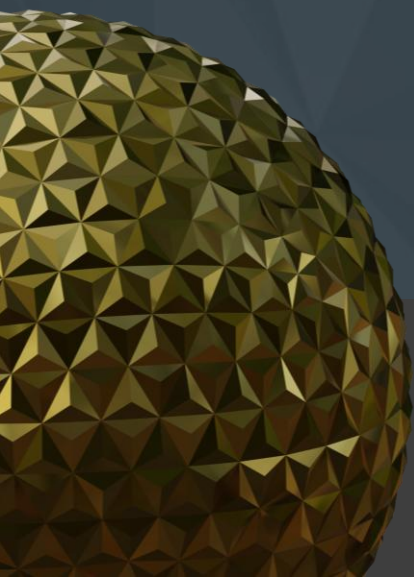
The Residential Project category honours an outstanding residential development of either a single building or overall project, new build, or conversion.

The Parks, Herefordshire nominated by Stolon Studios

Thie Clag, Douglas nominated by Manx Development Corporation

Water Row, Glasgow nominated by The City of Edinburgh Council and CCG

Western Villages, Edinburgh nominated by The City of Edinburgh Council and CCG





Residential Winner



Ebury Estate, London

Nominated by astudio and Westminster City Council



Project summary

The Ebury Estate Regeneration project in Westminster delivers a significant contribution to the borough's housing needs, targeting 50% affordable housing while ensuring high-quality living environments.

The design prioritises well-proportioned homes with generous ceiling heights, dual-aspect layouts, and no single-aspect north-facing units.

Public spaces are thoughtfully enhanced to create inclusive, safe, and vibrant environments for all ages.

The scheme integrates retail and non-residential uses to support the community, alongside extensive urban greening. New planting and the retention of Category A trees reinforces a sustainable, nature-led approach, making this development a benchmark for socially and environmentally conscious regeneration.

Judge's comments,

"The project brought together a wide range of local stakeholder groups, working closely with existing residents to ensure their needs were genuinely understood and addressed.

This collaborative process shaped the first phase of the development, creating an open and welcoming environment that fostered social interaction and enhanced safety through thoughtful landscaping and well-considered building layouts.

The result is a standout example of residential regeneration, delivering high-quality homes, revitalising the local area, and demonstrating what can be achieved through collaboration, innovation, and strong teamwork."

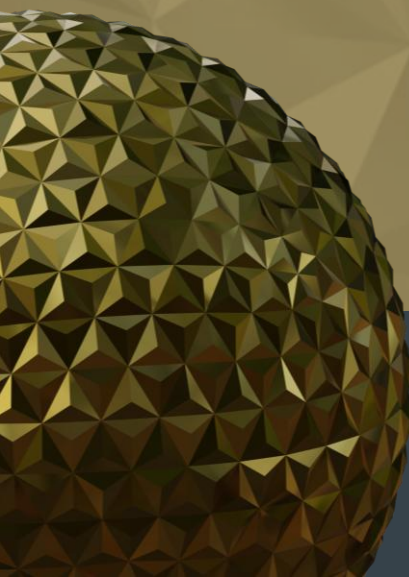
Sean Farrell FRICS
Residential Development Lead Judge

Ebury Estate Regeneration, London

Nominated by astudio and Westminster City Council



Environmental Impact Award



Category Sponsor





Shortlisted

This category recognises projects where innovation, design or construction techniques have been utilised to address environmental challenges and improve sustainability.

11 Belgrave, London nominated by Quadrum Global

Colwick Home Sluices Refurbishment, Nottingham nominated by Jackson Civil Engineering

Granton Station View, Edinburgh nominated by The City of Edinburgh Council and CCG

Rosslyn Castle, Roslin nominated by Page\Park Architects

Soldiers Centre, Pirbright nominated by Henry Brothers

The Duchess of Edinburgh Hall, Royal Military Academy Sandhurst nominated by Pick Everard

Category Sponsor





Shortlisted continued

This category recognises projects where innovation, design or construction techniques have been utilised to address environmental challenges and improve sustainability.

The Natural History Museum, London nominated by The Natural History Museum

Welcome Building, Bristol nominated by Trammell Crow Company

Western Villages, Edinburgh nominated by The City of Edinburgh Council and CCG

York Minster nominated by York Minster

Category Sponsor





Environmental Impact

Highly Commended



York Minster, York

Nominated by York Minster

Category Sponsor





Project summary

184 solar panels on the roof of York Minster were installed on the south Quire roof between October and December 2024. The panels are now generating >70,000 kWh of energy, enough to deliver a third of the Minster's electricity requirements.

The solar panel installation is one of many projects underway across the Minster as part of its Neighbourhood Plan. The plan, which has recently attracted international awards for innovation, is designed to address the challenges of the 21st century, principally responding to the climate emergency and the impacts of climate change on the fragile gothic masterpiece and its estate.

Judge's comments,

"This is a project that has shown true leadership in proving how even the most historic buildings can play their part in tackling the climate crisis.

The achievement lies not only in the energy savings but also in the way the project overcame complex planning challenges. Guided by the Localism Act and the York Minster Precinct Neighbourhood Plan, the Chapter and project team worked with City of York Council, Historic England and the local community to secure approval for renewable energy on an internationally recognised heritage site.

The judges praised the Minster's moral duty to act on climate change, its leadership in aligning with UN Sustainable Development Goals, and its precedent for sustainable innovation worldwide."

Mike Ward FRICS
Environmental Impact Lead Judge

York Minster

Nominated by York Minster

Category Sponsor





Environmental Impact Winner



The Natural History Museum, London

Nominated by The Natural History Museum

Category sponsor





Project summary

The Museum's South Kensington five-acre gardens have been transformed into a welcoming, accessible and biologically diverse green space with new outdoor galleries providing a place for visitors, researchers, and scientists to learn about Earth's changing biological diversity.

With ambitious and demanding KPIs, creating a highly accessible and sustainable design has been at the heart of this low carbon redevelopment.

The project's sustainable construction methods has been widely recognised, awarded the Silver Prize for Europe at the Holcim Foundation Awards for Sustainable Construction 2023.

Judge's comments,

"The project team embraced innovation and sustainability at every stage: delivering a diesel-free, zero-waste-to-landfill construction, embedding passive low-carbon design, and restoring diverse habitats including woodland, wetland, and grassland.

Equally impressive has been the teamwork behind the scheme all working together to create a space that not only inspires over a million visitors each year, but also sets new benchmarks for inclusive design, wellbeing, and urban biodiversity."

Mike Ward FRICS
Environmental Impact Lead Judge

The Natural History Museum, London

Nominated by The Natural History Museum

Category Sponsor





Infrastructure Award

• Category sponsor



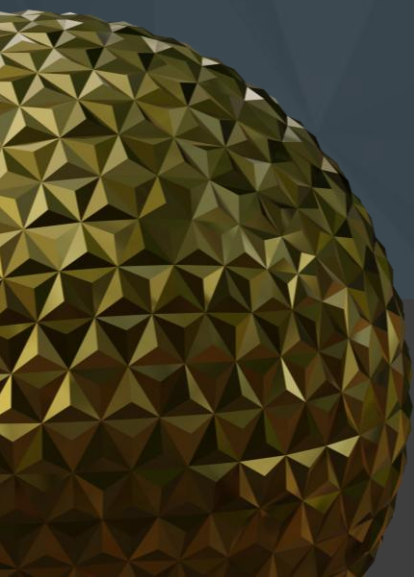
Shortlisted

This category celebrates the contribution of a team to the delivery of exceptional infrastructure projects. This will include basic structures, systems, and services required for operation.

Kirkstone Pass, Ambleside nominated by Westmorland and Furness Council

Thames Tideway Tunnel, London nominated by Tideway

Wildanet Project Lux, Cornwall nominated by MJT Surveyors





Infrastructure Winner



Thames Tideway Tunnel, London

Nominated by Tideway



Project summary

The Tideway project is the UK's single greatest intervention to tackle sewage pollution. The Thames Tideway Tunnel, London's 'super sewer', will dramatically improve water quality in the tidal Thames and provide critical infrastructure for the capital's future resilience.

Main construction is complete, and commissioning has begun. The project is hitting its headline delivery targets: it's on track to be delivered according to the timeframe set when the project began in 2015 and within the predicted annual cost range for water billpayers.

The project is also leaving a lasting above-ground legacy with three acres of world class public realm.

Judge's comments,

"Thames Tideway impressed the judges with its transformative impact on London's infrastructure and environment. The project exemplifies excellence in client leadership, safety, and the partnership between private funding and industry to deliver infrastructure for public good for decades to come.

The role of the surveyor was central to the successful delivery of the programme. Thames Tideway also leads the way in sustainable design, community collaboration, and delivering long-term social value. The project integrates heritage preservation with cutting-edge engineering, setting new standards for infrastructure delivery.

Its legacy will benefit generations, making it a model for responsible, future-focused infrastructure development.

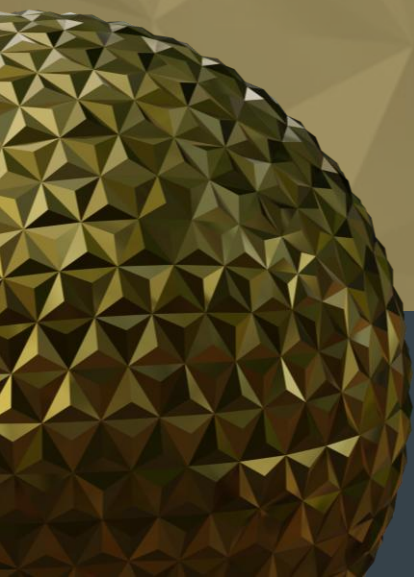
Jeevani Subasinghe MRICS
Infrastructure Award Lead Judge

The Thames Tideway Tunnel

Nominated by Tideway



Outstanding Contribution to Surveying by an SME



Category Sponsor





Shortlisted

This category recognises an outstanding small surveying firm (<50 employees), or a firm with under 50 employees/a surveying team working within an organisation with under 50 employees.

Air Building Consultancy

Ekkist

Honeywell Survey & Design

Magnitude Quantity Surveyors

River Crest Surveyors & Valuers

Scafol Surveying Solutions

SHARP Contract & Surveying

Category Sponsor





Outstanding Contribution to Surveying by an SME

Winner



Ekkist

Category sponsor





Summary

Ekkist is the UK's first health and well-being consultancy for the built environment, advising on design and operations of buildings to support human health.

In 2024, major residential developers including L&G, Clarion, Almacantar and Igloo Regeneration adopted the Ekkist Healthy Homes Checklist highlighting success in our ongoing mission to improve the standard of British housing.

Ekkist completed a WELL Platinum scheme for Landsec, consulted on the UK's first WELL for Residential scheme, worked on high profile WELL projects and innovative bespoke projects using the Ekkist Design for Well-being Framework, as well as speaking at major industry events.

Judge's comments,

"Not only have surveyors in the team actively co-written and contributed to articles such as RICS Guidance and Standards they have taken the time to out of their day-to-day business initiatives to support and guide new and existing surveyors across the UK and beyond that has truly benefitted the wider profession.

Their diverse skillsets and inclusive approach foster strong stakeholder relationships, while their business model challenges conventional thinking by prioritising human health in building design.

Ekkist integrates sustainability and social value into its work, promoting environmental awareness and well-being, and exemplifies resilience and leadership in addressing industry challenges."

Selina Baptiste MRICS
Outstanding contribution to surveying Award by an
SME Lead Judge

A large, textured, golden sphere with a faceted, crystalline surface, resembling a geode or a modern sculpture, positioned on the left side of the slide.

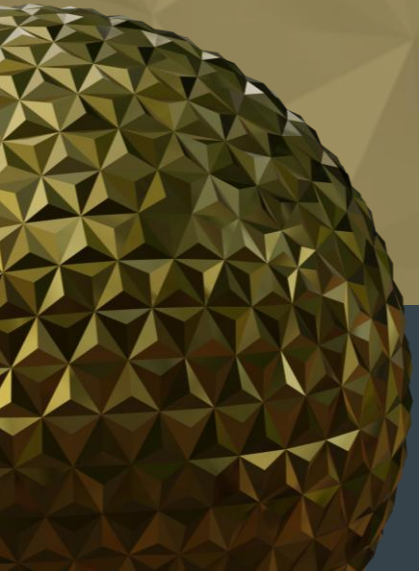
Ekkist

Category Sponsor





Outstanding Contribution to Surveying by a Medium/Large Firm



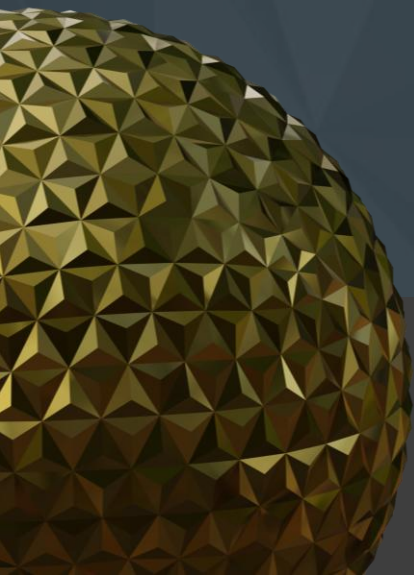


Shortlisted

This category recognises an outstanding small surveying firm or team with more than 50 employees.

Mott MacDonald Cost, Commercial, Quantity Surveying and Estimating Team

Transport for London Procurement & Commercial, Capital - Construction, Station Enhancements Team





Outstanding Contribution to Surveying by a medium or large firm

Winner



Transport for London Procurement & Commercial, Capital - Construction, Station Enhancements Team



Summary

The Transport for London, Procurement & Commercial, Capital, Construction, Station Enhancements Team has successfully redefined surveying's role in procurement, commercial strategy, and infrastructure delivery.

By integrating Early Contractor Involvement (ECI), innovative and incentive drive commercial models, risk sharing, and effective supply chain relationships, the team has set a new industry benchmark for commercial excellence in transport infrastructure.

Their work has delivered real cost savings, efficiency improvements, and sustainable outcomes, reinforcing our commitment to shaping the future of the UK's built environment.

Judge's comments'

"

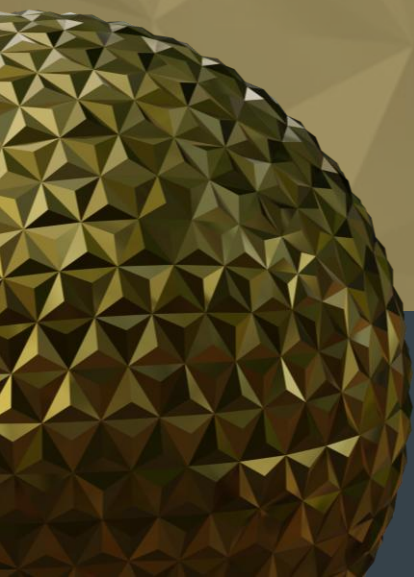
Mandy Spenceley FRICS
Outstanding Contribution to Surveying Award by a
Large Firm Lead Judge

A large, golden, faceted sphere is positioned in the bottom left corner of the slide, partially cut off by the edge.

Transport for London Procurement & Commercial, Capital, Construction, Station Enhancements Team



Ambassador of the Year



Category sponsor





Suki Bell FRICS



Learie Gonsalves
FRICS



Deborah Israel



Matthew Talliss
FRICS



This Award acknowledges an extraordinary volunteer for their distinguished service in advancing the Institutions UK Advocacy & Influence agenda such as Sustainability, data and technology, diversity and inclusion, people and skills and places and spaces to ensure that built environment enables society to meet the challenges of the future.

Category sponsor





Ambassador of the Year

Deborah Israel



Matthew Talliss FRICS



Learie Gonsalves FRICS



Suki Bell FRICS



This Award acknowledges an extraordinary volunteer for their distinguished service in advancing the Institutions UK Advocacy & Influence agenda such as Sustainability, data and technology, diversity and inclusion, people and skills and places and spaces to ensure that built environment enables society to meet the challenges of the future.

Category sponsor





Ambassador of the Year

Winner



Suki's passion for RICS became evident from our first meeting when she tabled her thoughts and strategy for creating a new Local Member Group for the Birmingham area.

As a former Regional Board Member, Vice Chair and Chair of RICS West Midlands Suki's professionalism and commitment make her deserving of the Ambassador of the Year Award.

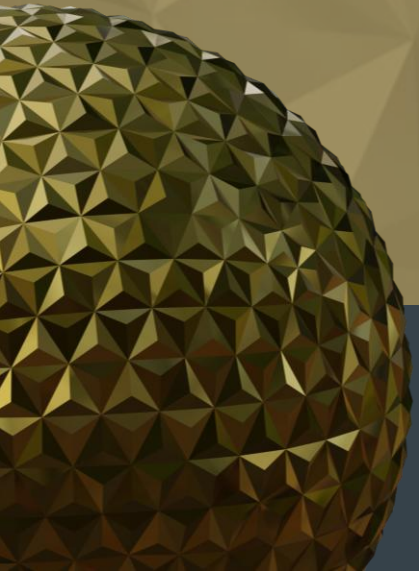
Suki Bell FRICS

Category sponsor





Lifetime Achievement Award





Lifetime Achievement Award



Julian's surveying career started 42 years ago in 1983 and has spanned many different specialisms including building surveying, investment, valuation, consulting and occupier advisory.

He is currently a senior director at Savills, leading the EMEA Occupier Strategy Advisory and is Chair of the CBI Property Group and the RICS Corporate Occupier Group.

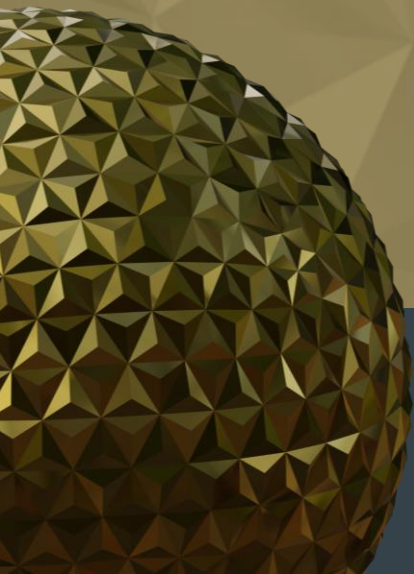
Julian is a true ambassador for Diversity and Inclusion within the profession, working especially closely with the Savills Apprentice team. Savills Apprenticeship Programme Lead has spoken of Julian's "unwavering commitment to recruiting and developing Future Talent for over a decade."

He has screened hundreds of applications, conducting countless interviews. "His positivity is infectious, and what truly sets him apart is his genuine desire to nurture and support the next generation. Julian doesn't just talk about investing in young talent, he lives it.

Julian Lyon FRICS



Project of the Year





Project of the Year

Winner



Stephenson Building, Newcastle

Nominated by Identity Consult



Project summary

The Stephenson Building at Newcastle University brings multiple engineering disciplines together under one roof in the form of a world class hub for engineering excellence and cross-disciplinary collaboration and industry partnerships.

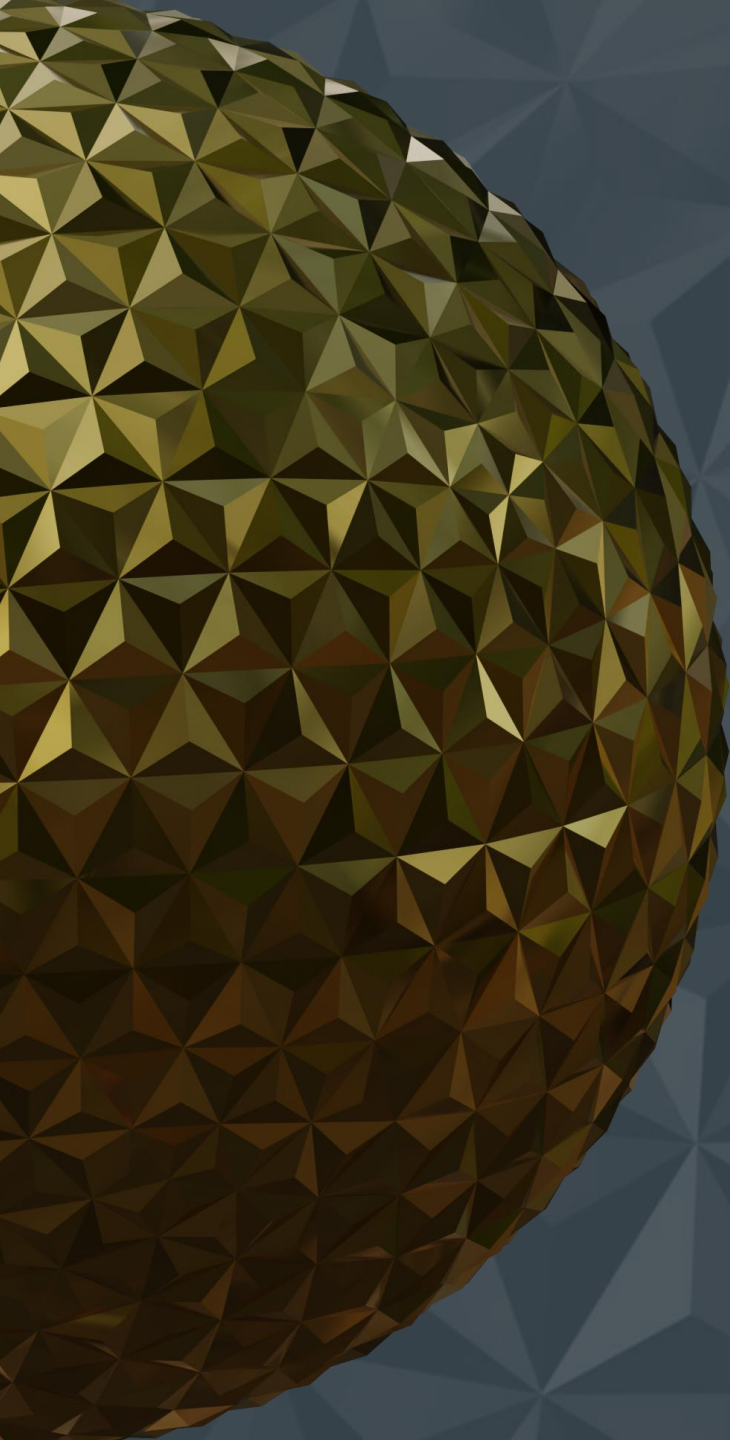
Located in the heart of the Newcastle University campus, the redeveloped building spans 198,000 square feet and features extraordinary research spaces, a student-run maker space and both specialist and multi-purpose education spaces along with technical workshops and support.

With a focus on digital manufacturing, sustainable propulsion and biomedical engineering, this hub is now a beacon for world leading education, research and collaboration.

Kerry Gibbs MRICS
National Awards Head Judge

Stephenson Building, Newcastle University

Nominated by Identity Consult



UK
Grand Final