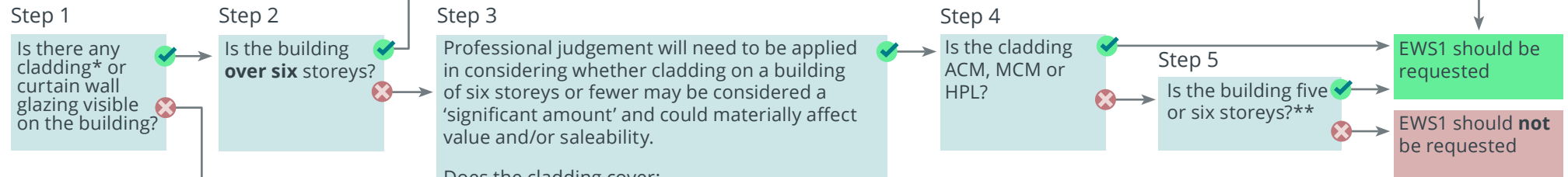


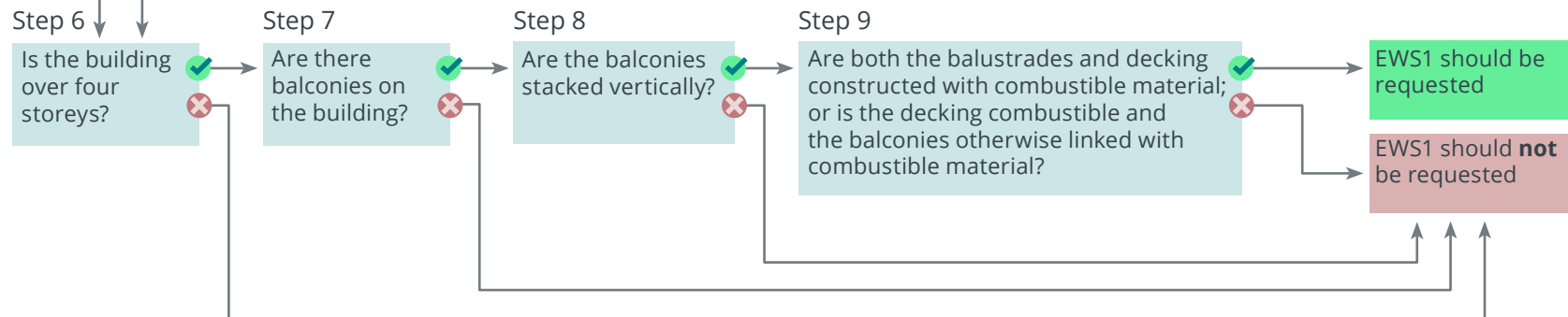
EWS1 form decision tree



Cladding



Balconies



*See cladding definition in the current edition of RICS' [Secured lending valuation of properties in multi-storey, multi-occupancy residential buildings with cladding](#)

**See section 3.1 of the current edition of RICS' [Secured lending valuation of properties in multi-storey, multi-occupancy residential buildings with cladding](#)