

**Project:** **RICS Life Cycle Evaluator Sample\_Compare** **Component Life Cycle**  
 Resource Data as of: 1Q2016

Project Properties		Project Options		PDF Export Options	
Project Type:	<b>Component comparison</b>	Show Totals Column:	<b>Yes</b>	Include CO2 results:	<b>No</b>
Years:	<b>25</b>	Show Discount / Inflation:	<b>No</b>	Include CO2e results:	<b>No</b>
Profile:	<b>Cost</b>	Show Capital cost/CO2:	<b>Yes</b>	Include Activities:	<b>Yes</b>
Usage:	<b>Average</b>	Cumulative Results:	<b>No</b>		
Price Basis:	<b>NPV</b>	NPV factor:	<b>Annual Discount Rate 2%</b>		
Notes:					

**Rebasing**

	Capital cost	Asset Replacement	Cleaning	Inspection	Planned maintenance	Reactive maintenance	Redecoration
<b>Date</b>							
Adjust to	1Q2018 ▾	288.00	246.80	244.10	246.80	246.80	252.30
<b>Location</b>							
Adjust to	South East ▾	112.00	112.00	112.00	112.00	112.00	112.00
<b>Overall</b>							
Overall adjustment	17%	19%	26%	19%	19%	19%	18%

**Components**

<b>Code</b>	<b>Description</b>			<b>Quantity</b>	<b>Unit</b>
<b>3.2.3.1</b>	<b>Ceramic floor tiling Vitrified ceramic floor tiles; 150 x 150 x 12mm; bedded, jointed and pointed in ceme...</b>			<b>300.00</b>	<b>m<sup>2</sup></b>
<b>Activity Class</b>	<b>Activity</b>	<b>Time Unit</b>	<b>Average Usage</b>	<b>High Usage</b>	<b>Low Usage</b>
Asset replacement	Remove Existing and Replace With New	Year	25	15	30
Cleaning	Clean Floor Finishes	Week	1	1	2
Inspection	Inspect Floor Finishes	Year	5	3	7
Planned maintenance	Regrouting	Year	8	5	10
Reactive maintenance	Allowance for Reactive Maintenance	Year	5	3	7
<b>3.2.5.4</b>	<b>Linoleum flooring; Forbo-Nairn Marmoleum; welded seams; fixing with adhesive; to sand and cement base 2.5...</b>			<b>300.00</b>	<b>m<sup>2</sup></b>
<b>Activity Class</b>	<b>Activity</b>	<b>Time Unit</b>	<b>Average Usage</b>	<b>High Usage</b>	<b>Low Usage</b>
Asset replacement	Remove Existing and Replace With New	Year	15	10	20
Cleaning	Clean Floor Finishes	Week	1	1	2
Inspection	Inspect Floor Finishes	Year	5	3	7
Planned maintenance	Refix Loose Material	Year	8	5	10
Reactive maintenance	Allowance for Reactive Maintenance	Year	5	3	7
<b>3.2.5.7</b>	<b>Carpet floor tiles Heuga Horizons; 500 x 500mm; tufted plain level loop; fixing with adhesive</b>			<b>300.00</b>	<b>m<sup>2</sup></b>
<b>Activity Class</b>	<b>Activity</b>	<b>Time Unit</b>	<b>Average Usage</b>	<b>High Usage</b>	<b>Low Usage</b>
Asset replacement	Remove Existing and Replace With New	Year	10	8	18
Cleaning	Clean Floor Finishes; Vacuum Carpet	Week	2	1	4
Cleaning	Clean Floor Finishes; Shampoo Carpet	Week	52	26	52
Inspection	Inspect Floor Finishes	Year	5	3	7
Planned maintenance	Refix Loose Material	Year	8	5	10
Reactive maintenance	Allowance for Reactive Maintenance	Year	5	3	7

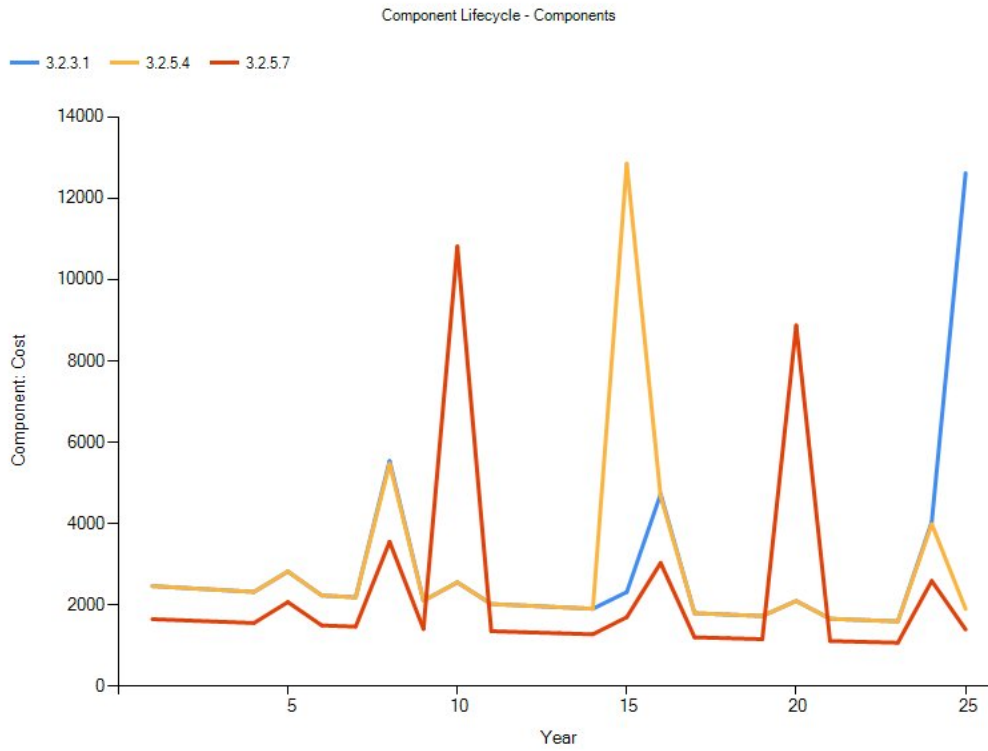
## Results

## Component results - Cost (£)

Year	3.2.3.1	3.2.5.4	3.2.5.7
Capital	12,724.02	10,815.88	7,326.63
1	2,458.22	2,458.22	1,644.63
2	2,410.02	2,410.02	1,612.38
3	2,362.76	2,362.76	1,580.76
4	2,316.44	2,316.44	1,549.77
5	2,815.48	2,815.48	2,063.85
6	2,226.49	2,226.49	1,489.59
7	2,182.83	2,182.83	1,460.38
8	5,534.37	5,466.91	3,548.39
9	2,098.07	2,098.07	1,403.67
10	2,550.07	2,550.07	10,815.15
11	2,016.60	2,016.60	1,349.17
12	1,977.06	1,977.06	1,322.71
13	1,938.29	1,938.29	1,296.78
14	1,900.28	1,900.28	1,271.35
15	2,309.68	12,849.34	1,693.08
16	4,723.53	4,665.95	3,028.52
17	1,790.68	1,790.68	1,198.02
18	1,755.57	1,755.57	1,174.53
19	1,721.15	1,721.15	1,151.50
20	2,091.95	2,091.95	8,872.19
21	1,654.31	1,654.31	1,106.79
22	1,621.87	1,621.87	1,085.08
23	1,590.07	1,590.07	1,063.81
24	4,031.49	3,982.35	2,584.81
25	12,621.87	1,894.74	1,388.91
<b>Totals</b>	<b>83,423.16</b>	<b>81,153.37</b>	<b>64,082.46</b>

Component results - Cost (£)

Components

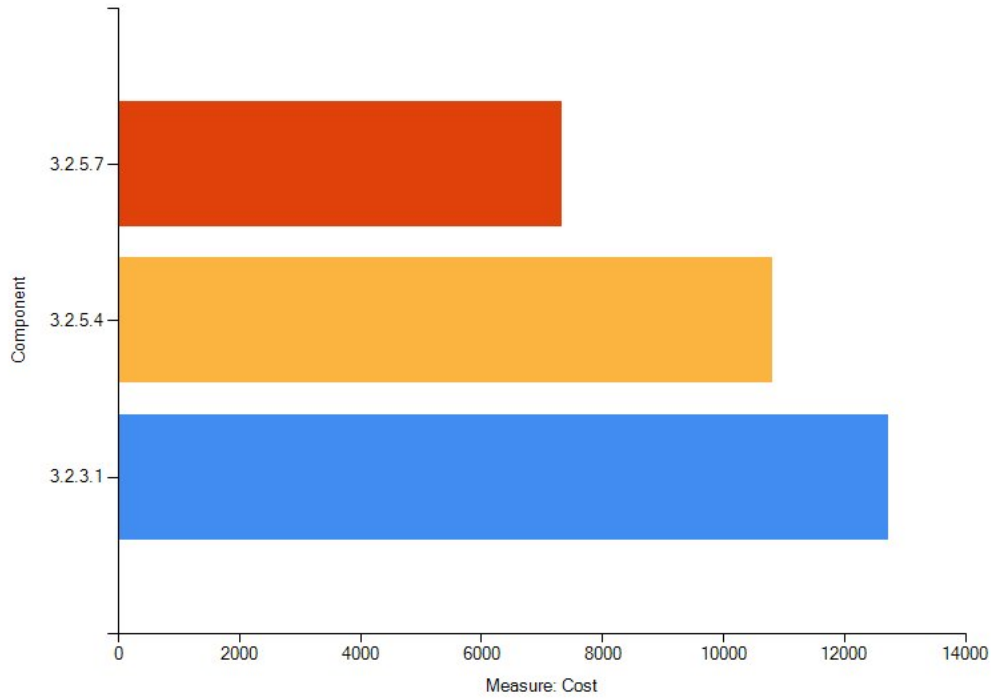


**Activity results - Cost (£)**

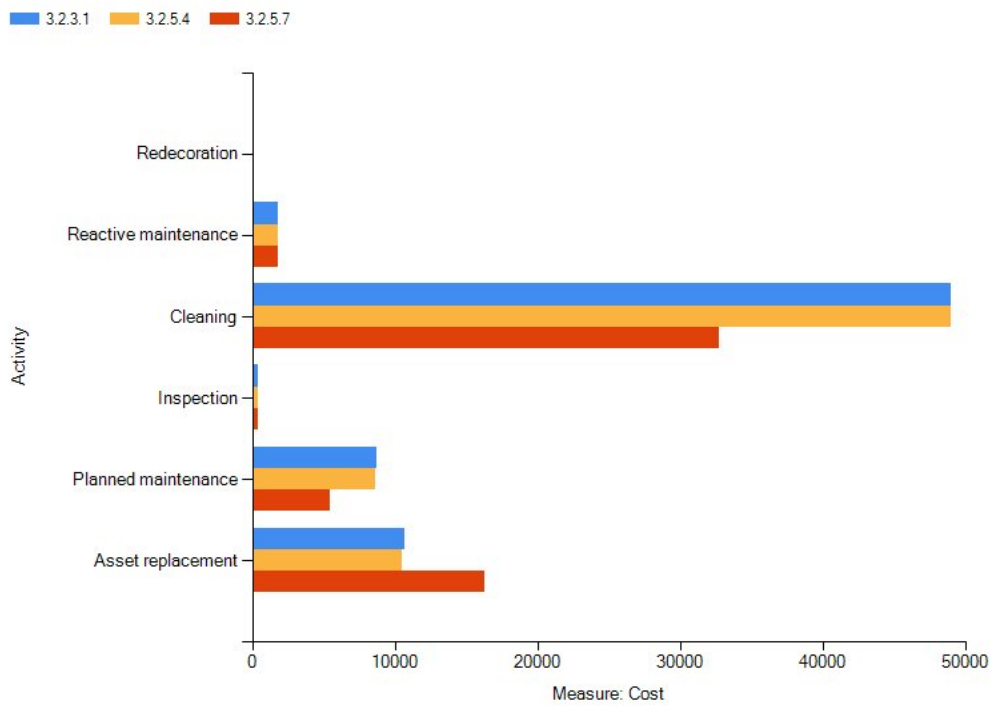
Component	Row total	Capital cost	Asset replacement	Cleaning	Inspection	Planned maintenance	Reactive maintenance	Redecoration
3.2.3.1	83,423.16	12,724.02	10,727.13	48,952.81	422.86	8,763.97	1,832.36	0.00
3.2.5.4	81,153.37	10,815.88	10,539.66	48,952.81	422.86	8,589.80	1,832.36	0.00
3.2.5.7	64,082.46	7,326.63	16,284.58	32,750.97	422.86	5,465.05	1,832.36	0.00

Activity results - Cost (£)

Component Lifecycle - Capital activities



Component Lifecycle - Life activities



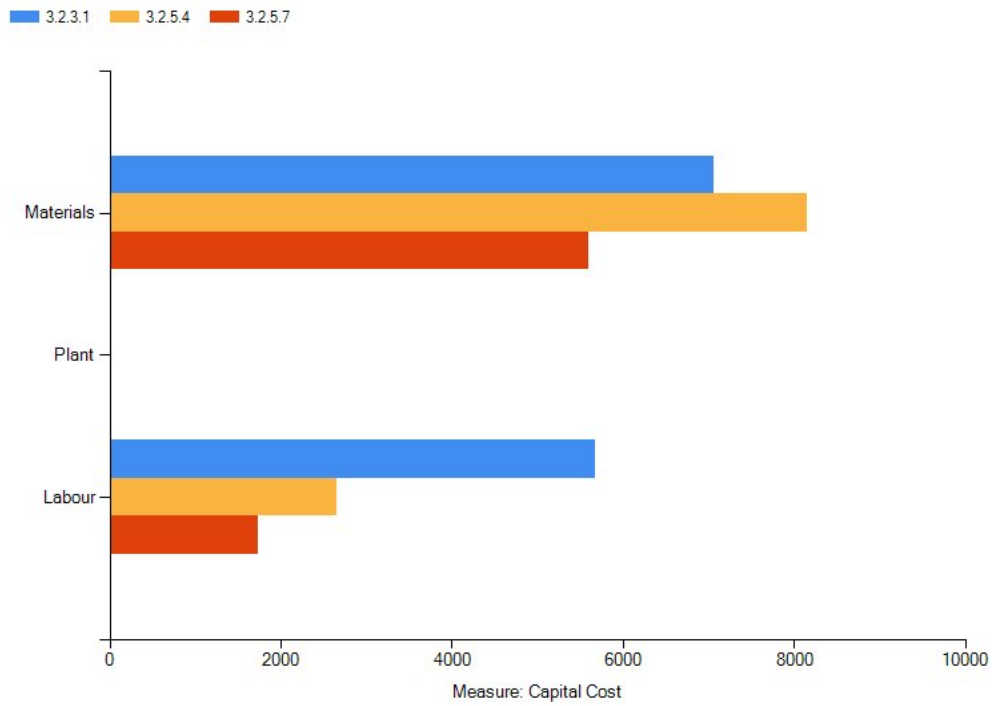
## Capital resource type Cost (£)

Component	Row total	Labour	Material	Plant
3.2.3.1	12,724.02	5,669.34	7,054.68	0.00
3.2.5.4	10,815.88	2,661.12	8,154.76	0.00
3.2.5.7	7,326.63	1,735.51	5,591.11	0.00

## Life resource type Cost (£)

Component	Row total	Labour	Material	Plant
3.2.3.1	70,699.14	64,285.86	6,233.16	180.11
3.2.5.4	70,337.49	61,177.64	9,112.80	47.05
3.2.5.7	56,755.83	38,923.58	11,115.92	6,716.33

Component Lifecycle - Resource types (Capital)



Component Lifecycle - Resource types (Life)

